

# 2010 GOLETA COMMUNITY PLAN UPDATE

*PHASE III: REVIEW AND REVISION*

Goleta Valley Planning Advisory Committee [GVPAC]

# Meeting Agenda

2

**Tuesday, February 8, 2011, 6:00PM**

- Pledge of Allegiance and Roll Call
- Public Comment Period
- Administrative
  - Announcements and Staff Updates
  - Action Minutes from 1/11/11
  - Calendar
- Continued Discussion of Community Development and Land Use (1 Hr)
- Review Section II. A, C, D & E
- Review Section III.F
- Adjourn to GVPAC #35 as needed

# Public Comment

*The Public Comment period is set aside to allow public testimony on items not on today's agenda.*

*The time allocated to each speaker will be set at the discretion of the Chair.*

# Administration

4

- Announcements and Staff Updates
- Action Minutes from 1/11/10
- Calendar

# Tonight's Objective

5

- GVPAC Discussion
  - Innovations in Draft Policy Framework
  - Draft Land Use Map
  - Other ideas for land use scenarios from specific landowners
- Begin GVPAC review and comments on Section II
- Complete review and comments on Section III.F

# What is Section II?

- Defines the planning area, its subareas, and its land use goals.
- Defines community's land use characteristics and permitted uses.
- Adopts the community's land use map
- Adopts policies for planning and development in the community, including policies for specific land uses.

# More input needed...

7

- Specific ideas for Valley Junction or the Bowtie?
- MTD land use planning
- Consequences of local food production within suburban sphere? How much and what scale does the community want?
- Specific ideas for urban agricultural uses?
- Specific ideas about community character and architecture?

# Focus Questions (1 hr Discussion)

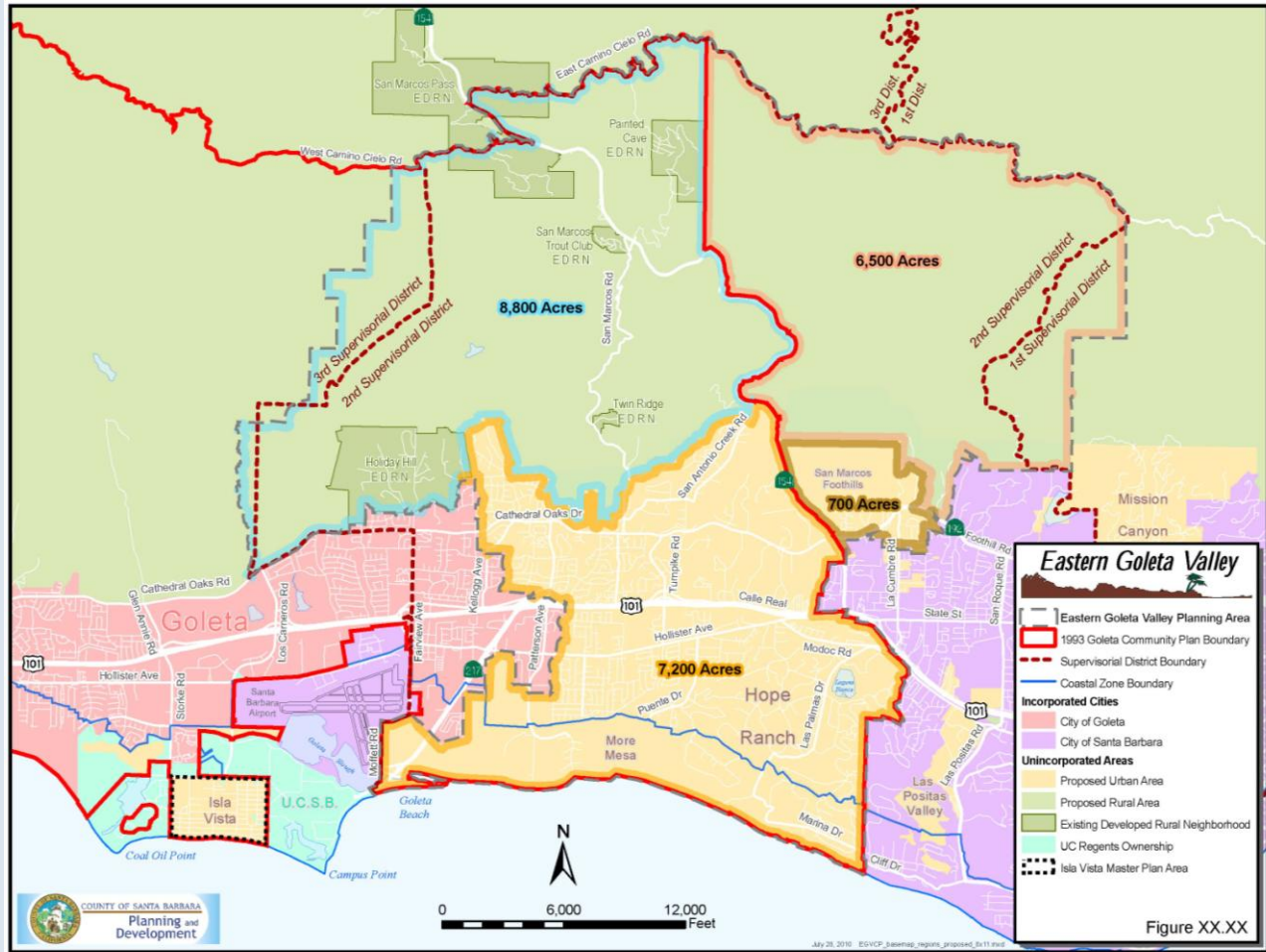
8

- Does the land use map achieve the land use goals?
- Do the planning tools included achieve the land use goals (actions, development standards, programs, etc)?
- Do the alternate scenarios achieve the land use goals?

# Plan Review and Comment

## Section II

### Chapters A, C, D, and E



## Section II.A

### Planning Area Boundaries and Permitted Uses

# Objective EGV-1

(p.45)

11

- “Establish the geographic boundary of Eastern Goleta Valley, inclusive of recognized sub-areas”
  - Urban Area
  - Rural Area
  - Valley Junction
  - State Street Bowtie Community Corridor

# Objective EGV-2

(p.46)

12

- “Establish a watershed-based framework for land use and development planning and decision-making”

# Objective EGV-3

(p.48)

13

- “Enhance resource efficiency and minimize environmental impacts”

# Objective EGV-4

(p.49)

14

- “Strengthen the sense of community and uniqueness of EGV.”

# Objective EGV-5

(p.50)

15

- “Enhance the Valley Junction to connect residential uses with services, goods, transit, and social, cultural, and/or civic areas.”

# Objective EGV-6

(p.52)

16

- “Increase the production and availability of local food.”

# Objective EGV-7

(p.52)

17

- “Consider EGV as a unique community in its identity, but united with the South Coast of Santa Barbara County in the interest of well-coordinated regional planning.”



18

## Section II.C

### Residential Land Uses

# What is Section II.C?

19

- Policies for any property designated for residential land uses.

# Objective LUR-EGV-1 (p.58)

20

- Provide a variety of housing types and costs, locate residential neighborhoods near services, parks and transportation opportunities to facilitate short commutes, and ensure residential development meets housing needs of existing and future residents.

# Objective LUR-EGV-2 (p.60)

- Enhance the physical structure, connectivity, and character of existing residential neighborhoods of the community while optimizing areas designated for agriculture, areas for conservation of the natural environment, and public open spaces.



## Section II.D

### Commercial Land Uses

# What is Section II.D?

23

- Policies for any property designated for commercial land uses.

# Objective LUC-EGV-1 (p.72)

24

- Provide local commercial services, employment and business opportunities, mixed with attainable housing choices.

# Objective LUC-EGV-2 (p.73)

25

- Promote and maintain a vibrant local economy and support local businesses.



26

## Section II.E

### Agricultural Land Uses

# What is Section II.E?

27

- Policies for any property designated for agricultural land uses.

# Objective LUA-EGV-1 (p.87)

28

- Preserve and enhance the agricultural operations and characteristics of Eastern Goleta Valley.

# Objective LUA-EGV-2 (p.87)

29

- Support agriculture as a vital element in a sustainable mix of economic activity.



## Section III. F: Transportation and Circulation

GVPAC Talking Points

Public Comment

# What is Section III.F?

31

- Policies and tools for County public right of way and transportation facilities.

# Objective TC-EGV-1 (p.141)

32

- “Enhance the existing automobile transportation network to make walking, biking, and public transit opportunities practical, accessible, and attractive to residents and commuters.”

# Objective TC-EGV-2 (p.149)

33

- “Consider the facility needs of cyclists, pedestrians, and public transit riders in land use and development decisions.”

# Objective TC-EGV-3 (p.151)

34

- “Design streets to improve local air quality, ambient climate and aesthetics, and to provide sufficient parking for all modes of travel at destinations.”

# Written Comments?

35

- **Submit to:**

Planning and Development Dept.

Long Range Planning Division

RE: Goleta Community Plan Update

123 E. Anapamu St, 1<sup>st</sup> Floor

Santa Barbara, CA 93101

# Assignment for Meeting #35

36

- Read Section II: Community Development and Land Use
- Comprehend the Land Use Policy Framework
- Record Comments and Talking Points in your Comment Log
  - ▣ Focus Question: “How does the policy framework achieve the GVPAC goals?”
- Bring Comment Log with you to Meeting #35

# Adjourn

GVPAC Meeting #35:

TBD

6:00PM

Planning Commission Hearing Room