

AGRICULTURAL LAND USE

FOCUS QUESTIONS

Which agricultural areas are valued in the Eastern Goleta Valley?

Which agricultural areas are underutilized and/or not valued as agriculture in the Eastern Goleta Valley?

What are the goals for Agricultural Land Use?

The following list includes, but is not limited to, opportunities that have been discussed by the GVPAC during the planning process and are available for your consideration:

- Rural and Urban Agricultural Operations, specifically South Patterson Agricultural Areas, MTD Property, San Marcos Farms/Lane Farms.
- Preservation of viable agricultural operations
- Support for Local Food Production and Agribusinesses

1993

Commercial Land Use

Goleta Community Plan Principle:
To encourage preservation of viable Goleta agricultural lands.

Goals:

Community Development Super Element Goal: To Provide Housing Affordable To All Goleta Residents, To Strive For A Balance Between Jobs And Housing, To Provide A Range of Commercial And Industrial Uses Which Promote Ordinary Economic Development, And To Protect Natural Resources.

2006

Commercial Land Use

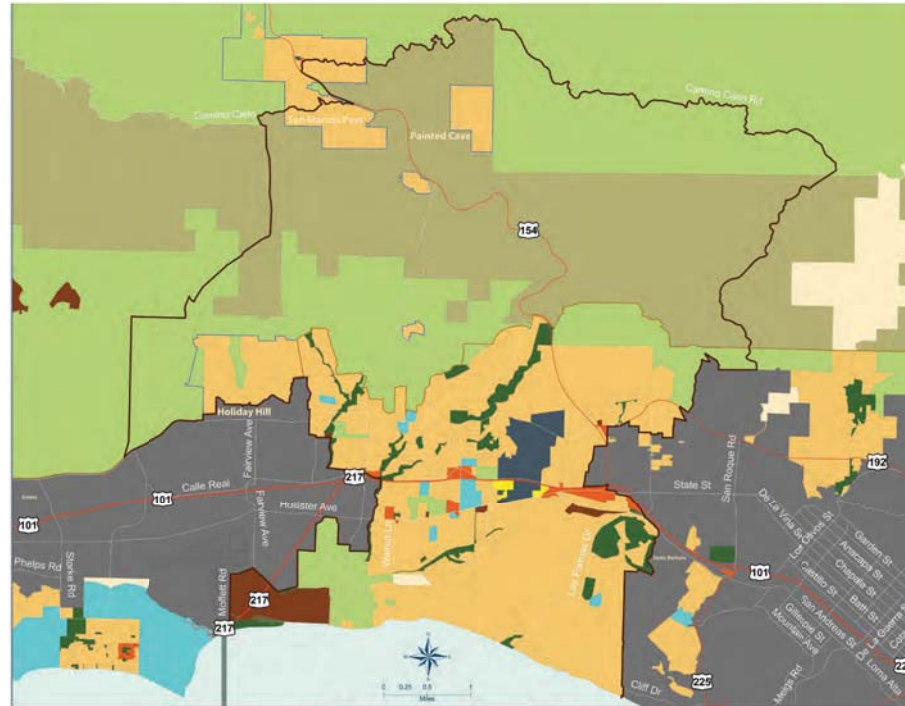
GVC 20/20 Vision Statement:
Agriculture is a vital element in the mix of land use and sustainable economic activity.

Goals:

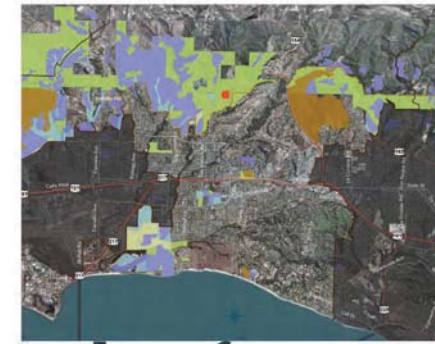
Goal #1: Protect agricultural lands from encroachment by residential and commercial development.
Goal #2: Promote opportunities for sustainable agriculture.



Land Use	Acreage
Residential	6,789
Commercial	111
Agriculture	13,887
Open Lands	70
Mountainous Area	17,715
Recreation	549
Community Facility	21
Educational Facility	161
Institutional	302
Utility	454



GENERAL LAND USE DESIGNATIONS
Eastern Goleta Valley



FARMLAND CLASSIFICATIONS



URBAN AGRICULTURE

FROM RURAL...



TO URBAN.



FROM FIELD AND GREENHOUSE...



TO MARKET.



How and where do you want to the goals to be achieved?

The following list includes, but is not limited to, planning tools that have been discussed by the GVPAC during the planning process and are available for your consideration:

1. agricultural protection program
2. agricultural planned development,
3. transfer of development rights,
4. purchase of development rights
5. open space easements
6. land trusts.
7. Conservation easements or voluntary agricultural preservation agreement with County.
8. New/Unique Land Use/Zoning Designations or Conditions
9. Other



SOUTH PATTERSON AVE



TURNPIKE/HOLLISTER



MTD/CALLE REAL



GVPAC Community Workshop Plan

Agricultural Land Use					
Materials	References	Maps/Graphics	What are the goals for...	Planning Tools	Focus Questions
Pens Paper Easel(s) Barebones Table Map for notes GVC vs. GCP goals Land Use Stats	Williamson Act Summary GCP Agriculture Chapter GVC vs. GCP goals Land Use Stats	Land Use Maps with Ag emphasis Photo Array Soils Map/Farmland Map	1. Rural and Urban Agricultural Operations, specifically South Patterson Agricultural Areas, MTD Property, San Marcos Farms/Lane Farms. 2. Preservation of viable agricultural operations 3. Support for Local Food Production and Agribusinesses	The following list includes, but is not limited to, tools that have been discussed by the GVPAC during the planning process and are available for your consideration: 1. agricultural protection program 2. agricultural planned development, 3. transfer of development rights, 4. purchase of development rights 5. open space easements 6. land trusts. 7. Conservation easements or voluntary agricultural preservation agreement with County. 8. New/Unique Land Use/Zoning Designations or Conditions 9. Other	Which agricultural areas are valued in the Eastern Goleta Valley? Which agricultural areas are underutilized and/or not valued as agriculture in the Eastern Goleta Valley? What goals should be included in the updated Goleta Community Plan for agricultural land use? Which planning tools would you like to see used to realize the goals for agricultural land use in the updated Goleta Community Plan?

GOLETA VALLEY COMMUNITY SURVEY Results Summary by Land Use Topic

AGRICULTURAL LAND USE

please indicate on a scale of 1 to 7 how important it will be for the County of Santa Barbara to consider in its plans for the future of the Eastern Goleta Valley.	Favorable Rating	Neutral	Unfavorable Rating	DK/NA	
Maintaining existing agricultural properties in viable agricultural operations.	68%	24%	8%	0%	
please indicate if the County is doing an excellent job, a good job, only a fair job, or a poor job.	Excellent Job	Good Job	Fair Job	Poor Job	DK/NA
Enhancing the character and identity of the Eastern Goleta Valley.	4%	19%	37%	25%	15%
please indicate on a scale of 1 to 7 how important it will be for the County of Santa Barbara to consider in its plans for the future of the Eastern Goleta Valley.	Favorable Rating	Neutral	Unfavorable Rating	DK/NA	
South Patterson Agricultural Areas	50%	31%	14%	5%	
Turnpike Shopping Center	34%	50%	11%	5%	
Turnpike/Calle Real Highway Commercial area	28%	53%	13%	6%	
please indicate if you strongly agree, somewhat agree, somewhat disagree, or strongly disagree.	Strongly Agree	Somewhat Agree	Somewhat Disagree	Strongly Disagree	DK/NA
The character of the Eastern Goleta Valley has changed in recent years due to too much development.	34%	30%	22%	11%	3%
please indicate whether you think over the next 10-20 years the County will need a lot more, some more, a little more, or no more of that building type.	A lot more	Some more	A little more	No more	DK/NA
Local farm operations, including greenhouses, barns, and other agricultural structures.	25%	27%	28%	16%	3%

