

ENVIRONMENTAL PROTECTION AND STEWARDSHIP

FOCUS QUESTIONS

Which environmental resources are well protected in the Eastern Goleta Valley?

Which environmental resources are in need of protection, enhancement, or restoration in the Eastern Goleta Valley?

What are the goals for Environmental Protection and Stewardship?

The following list includes, but is not limited to, opportunities that have been discussed by the GVPAC during the planning process and are available for your consideration:

1. Air Quality and Greenhouse Gases
2. Noise
3. Watersheds and Waterways/Stormwater Runoff Management
4. Ecologic and Biologic Resources
5. Geology, Soils, and Topography

<p>Hydrology Goleta Community Plan Principle: To provide protection for natural resources and sensitive habitats in riparian, watershed, and biologically sensitive habitats.</p> <p>Goals: Resources and Constraints: Support Element Goal: Protect and Enhance the Community's Natural Resources and Support the Environmental Conditions for the Planning, Construction and Operation of new development.</p> <p>GVC 2020 Vision Statement: We are a community that embraces conservation stewardship and consciously living within our resources.</p> <p>Goals: Watersheds Master Goal: Preserve and improve the health of our watersheds, including riparian, watershed, and biologically sensitive habitats.</p> <p>Goal 43: Develop and implement riparian, watershed, and biologically sensitive habitat management plans and programs.</p> <p>Goal 44: Develop and implement riparian, watershed, and biologically sensitive habitat management plans and programs.</p> <p>Goal 45: Develop and implement riparian, watershed, and biologically sensitive habitat management plans and programs.</p>	<p>Geography Goleta Community Plan Principle: To provide protection for natural resources and sensitive habitats in riparian, watershed, and biologically sensitive habitats.</p> <p>Goals: Resources and Constraints: Support Element Goal: Protect and Enhance the Community's Natural Resources and Support the Environmental Conditions for the Planning, Construction and Operation of new development.</p> <p>GVC 2020 Vision Statement: We are a community that embraces conservation stewardship and consciously living within our resources.</p> <p>Goals: Watersheds Master Goal: Preserve and improve the health of our watersheds, including riparian, watershed, and biologically sensitive habitats.</p> <p>Goal 43: Develop and implement riparian, watershed, and biologically sensitive habitat management plans and programs.</p> <p>Goal 44: Develop and implement riparian, watershed, and biologically sensitive habitat management plans and programs.</p> <p>Goal 45: Develop and implement riparian, watershed, and biologically sensitive habitat management plans and programs.</p>	<p>Ecology & Biology Goleta Community Plan Principle: To provide protection for natural resources and sensitive habitats in riparian, watershed, and biologically sensitive habitats.</p> <p>Goals: Resources and Constraints: Support Element Goal: Protect and Enhance the Community's Natural Resources and Support the Environmental Conditions for the Planning, Construction and Operation of new development.</p> <p>GVC 2020 Vision Statement: We are a community that embraces conservation stewardship and consciously living within our resources.</p> <p>Goals: Watersheds Master Goal: Preserve and improve the health of our watersheds, including riparian, watershed, and biologically sensitive habitats.</p> <p>Goal 43: Develop and implement riparian, watershed, and biologically sensitive habitat management plans and programs.</p> <p>Goal 44: Develop and implement riparian, watershed, and biologically sensitive habitat management plans and programs.</p> <p>Goal 45: Develop and implement riparian, watershed, and biologically sensitive habitat management plans and programs.</p>
--	--	--

How and where do you want the goals to be achieved?

The following list includes, but is not limited to, planning tools that have been discussed by the GVPAC during the planning process and are available for your consideration:

1. Low Impact Development Standards
2. Water-conserving technologies and development standards
3. Greywater and/or Recycled Water Facilities
4. Buffers and Setbacks from sensitive resources
5. Restoration Plans for Habitat
6. Transit Oriented Development and/or smart growth
7. Wildlife Corridor/Open Space Planning
8. Greywater/Recycled Water Systems
9. Resource Overlays
10. Conservation Easements
11. Noise and Air Quality Buffers
12. Resource Specific Development Standards, such as Oak Trees
13. Landscaping/Streetscaping for Habitat, Air Filters, and Heat Sinks
14. Other

Goleta Valley Planning Advisory Committee [GVPAC]
Community Planning Workshop
Saturday, July 11, 2009

Legend

- Eastern Goleta Valley
- Urban/Rural Boundary
- EDRN
- Flight Approach Zones
- SB County Bus stops
- Existing and Proposed Trails
- Existing and Proposed Bikeways
- Regional Highways
- Hay 101 Buffer (500ft)

Habitat and Hydrology

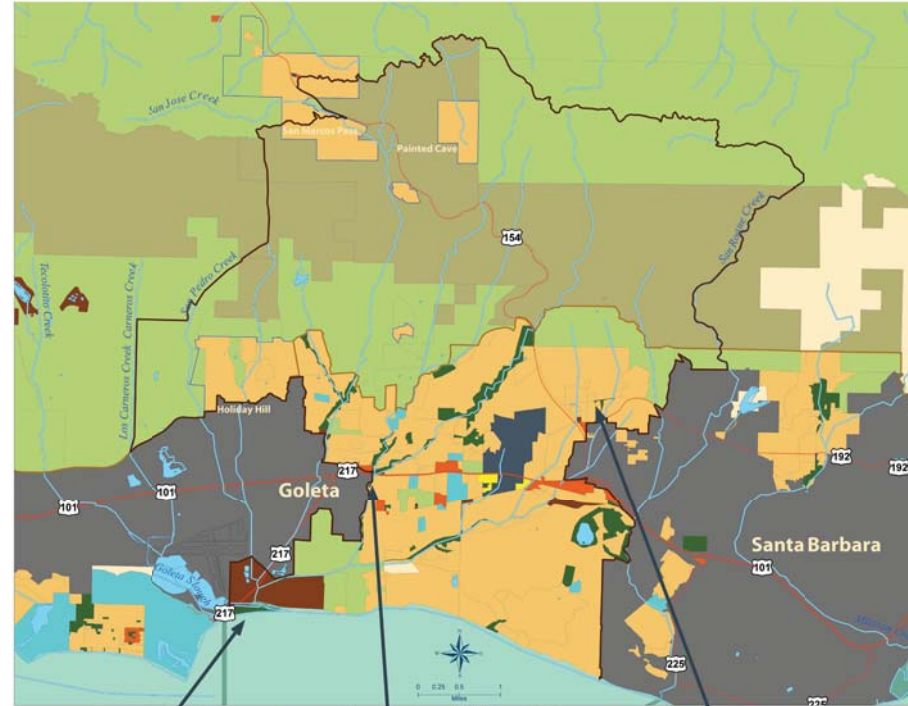
- Waterways
- Streams
- ESH
- Riparian
- Flood Hazard (100 yr)
- Regional Retention Basin
- Runoff Outfalls

Geology and Land

- 40% Slope
- 30% Slope
- Existing and Proposed Parks

Land Use Designations

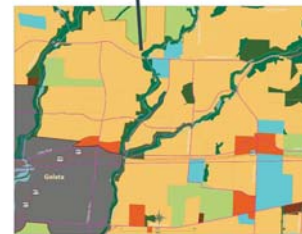
- Agriculture
- Commercial
- Community Facility
- Educational Facility
- Industrial
- Institutional
- Mountainous Area
- Open Lands
- Recreation
- Residential
- Transportation Corridor
- Utility



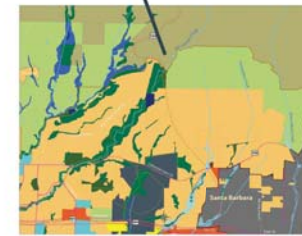
GENERAL LAND USE DESIGNATIONS
Eastern Goleta Valley



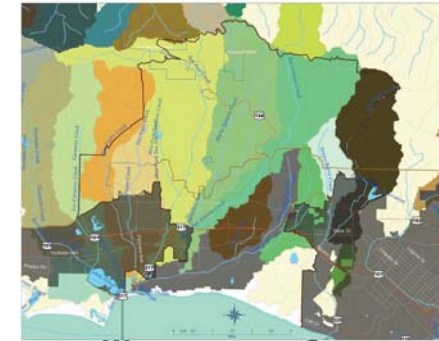
GOLETA SLOUGH CONVERGENCE



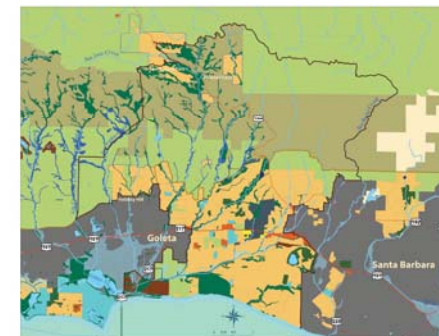
PATTERSON CONVERGENCE



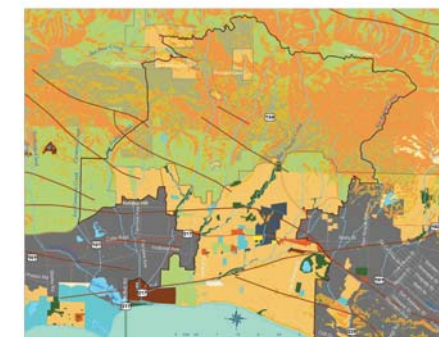
SAN MARCOS FOOTHILLS



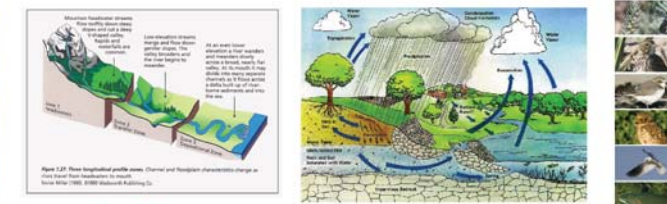
WATERSHEDS AND CREEKS



**HYDROLOGY AND HABITAT:
Waterways, Floodplains and ESHA/Riparian**



GEOLOGY: SLOPES AND FAULTS



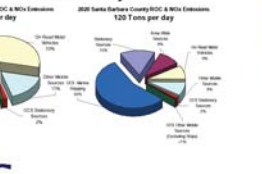
Watersheds, Hydrology, and Habitat Preservation



Watersheds, Hydrology, and Habitat Preservation



Watersheds, Hydrology, and Habitat Preservation



Air Quality

Rain Barrels and Greywater/Recycled Systems



Rain Barrels and Greywater/Recycled Systems



BioRetention and Low Impact Development



Sustainable Landscape



Sustainable Landscape

Planning and Development Dept.
Office of Long Range Planning
County of Santa Barbara



GVPAC Community Workshop Plan

Environmental Protection and Stewardship

Materials	References	Maps/Graphics	What are the Goals for...	Planning Tools	Focus Questions
Pens Paper Easel(s) Barebones Table Map for notes GVC vs. GCP Land Use Stats	GCP Chapters	Slope, Geology Map ESHA/Riparian Map Noise Contours Watershed Map LID Graphics Habitat Photos	1. Air Quality and Greenhouse Gases 2. Noise 3. Watersheds and Waterways/Stormwater Runoff Management 4. Ecologic and Biologic Resources 5. Geology, Soils, and Topography	The following list includes, but is not limited to, tools that have been discussed by the GVPAC during the planning process and are available for your consideration: 1. Low Impact Development Standards 2. Water-conserving technologies and development standards 3. Greywater and/or Recycled Water Facilities 4. Buffers and Setbacks from sensitive resources 5. Restoration Plans for Habitat 6. Transit Oriented Development and/or smart growth 7. Wildlife Corridor/Open Space Planning 8. Greywater/Recycled Water Systems 9. Resource Overlays 10. Conservation Easements 11. Noise and Air Quality Buffers 12. Resource Specific Development Standards, such as Oak Trees 13. Landscaping/Streetscaping for Habitat, Air Filters, and Heat Sinks 14. Other	Which environmental resources are well protected in the Eastern Goleta Valley? Which environmental resources are in need of protection, enhancement, or restoration in the Eastern Goleta Valley? What goals should be included in the updated Goleta Community Plan for the environmental resources? Which planning tools would you like to see used to realize the goals for environmental protection and stewardship in the updated Goleta Community Plan?

GOLETA VALLEY COMMUNITY SURVEY Results Summary by Land Use Topic

ENVIRONMENTAL PROTECTION AND STEWARDSHIP

please indicate on a scale of 1 to 7 how important it will be for the County of Santa Barbara to consider in its plans for the future of the Eastern Goleta Valley.

	Favorable Rating	Neutral	Unfavorable Rating	DK/NA
Protecting watersheds, biological resources, and local ecology from impacts of the built environment.	76%	16%	8%	0%
Improving air quality and greenhouse gas emission levels.	52%	34%	13%	1%
Air quality and climate change	58%	32%	9%	0%
Waterway pollution due to runoff	69%	26%	5%	0%
Water supply and quality	81%	15%	4%	0%
Preservation of biodiversity	56%	34%	9%	1%
Preservation of ecological and biological resources and habitats	63%	29%	8%	0%
Flooding and geologic stability	60%	33%	7%	0%
Noise	46%	45%	9%	0%
Public views and visual resources	59%	32%	8%	1%
History and archeology	30%	57%	12%	1%
Hazardous Materials	57%	36%	7%	0%
Green building, sustainable development, and energy efficiency	57%	34%	8%	0%

please indicate if the County is doing an excellent job, a good job, only a fair job, or a poor job.

	Excellent Job	Good Job	Fair Job	Poor Job	DK/NA
Managing natural and environmental resources.	4%	39%	33%	9%	15%
Enhancing the character and identity of the Eastern Goleta Valley.	4%	19%	37%	25%	15%
Implementing programs to make the County of Santa Barbara more energy efficient, to increase resource conservation, and promote environmental regulations.	6%	26%	33%	11%	23%

please indicate if you strongly support, somewhat support, somewhat oppose, or strongly oppose the goal for the future of the Eastern Goleta Valley.

	Strongly support	Somewhat support	Somewhat oppose	Strongly oppose	DK/NA
Requiring new development and redevelopment to use energy efficient/green building techniques and technologies.	48%	33%	10%	7%	2%
Reducing contaminated runoff from the built environment into local waterways.	68%	26%	3%	1%	2%
Protecting viable habitat areas and wildlife corridors from encroachment by built environment.	71%	20%	6%	2%	1%
Protecting local open space and natural resources, including wetlands, creeks, trails, active and passive parks, and beach access from encroachment by built environment.	76%	18%	3%	3%	0%
Protecting and enhancing water quality and supply.	75%	21%	1%	2%	0%
Increasing amount of public active and passive recreation, trails and open space.	53%	35%	9%	2%	1%
Requiring new development and redevelopment to protect and/or enhance public views.	51%	34%	7%	6%	2%
Improving air quality and reducing greenhouse gas emissions locally.	54%	27%	9%	8%	3%

