

# PARKS, RECREATION, TRAILS, OPEN SPACE, AND VIEWS

## FOCUS QUESTIONS

Do the parks and recreation opportunities in the Eastern Goleta Valley meet the needs of the community?

Do the parks and recreation opportunities in the Eastern Goleta Valley meet the needs of the community?

What are the goals for Parks, Recreation, Trails, Open Space and Public Views?

The following list includes, but is not limited to, opportunities that have been discussed by the GVPAC during the planning process and are available for your consideration:

- 1. Active Parks, with playgrounds, ball fields, picnic areas, etc.
- 2. Passive Parks, with unimproved trails, habitat areas, and open spaces.
- 3. Open spaces for habitat protection, views, and passive recreation
- 4. Local and Regional Hiking/Biking Trails
- 5. Public View Corridors

### Parks, Recreation, Trails/ Open Space and Visual Resources

**Goleta Community Plan Principles:**  
To ensure that public facilities and infrastructure be planned and located to serve the residents and workers of Goleta at acceptable levels.

**To maintain and enhance the aesthetic qualities in the Goleta community design:**

**Goals:**  
Public Facilities and Services Super Element Goal: Provide improvements in Circulation, Parking and Other Public Facilities and Services for Commercial, Industrial and Residential Areas for the Benefit of the Entire Community.  
Resources and Circulation Super Element Goal: Protect and Enhance the Community's Natural Resources and Respect the Environmental Constraints in the Planning, Construction and Operation of New Development.

### Parks, Recreation, Trails/ Open Space and Visual Resources

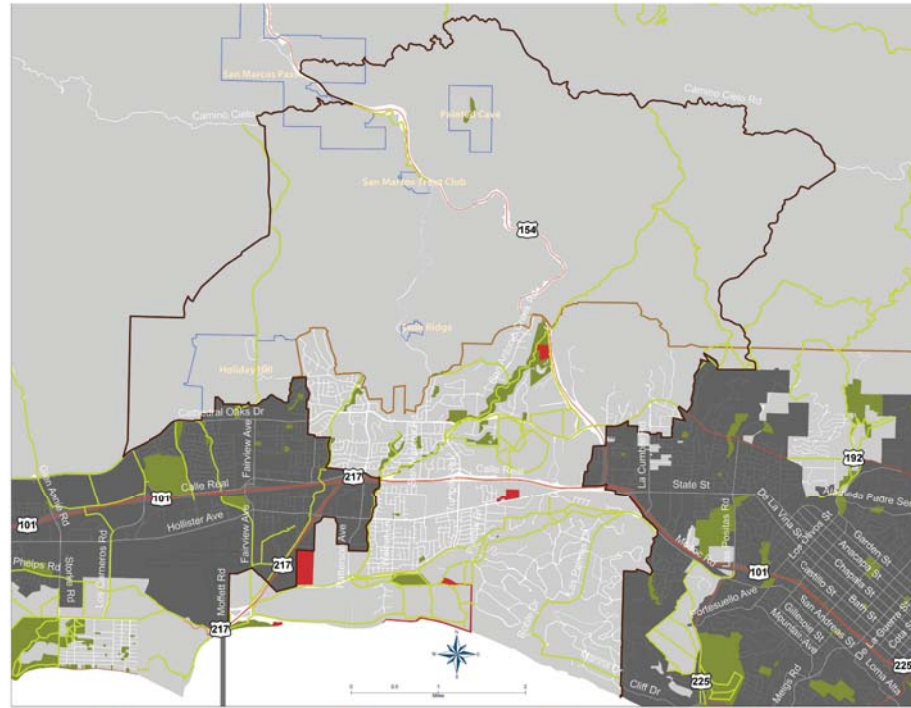
**GVC 2020 Vision Statement:**  
Our community has preserved and enhanced our public lands. Open space, protected habitats and parks are plentiful, beautiful and accessible to the neighborhoods they serve.

**Goals:**  
Goal #1: Provide an amount of publicly open space available to residents of the Eastern Goleta Valley.  
Goal #2: Provide better and better access and greater recreational opportunities that meet or exceed County standards.  
Goal #3: Provide easy access to trails, beaches and other open space.  
Goal #4: Link open space to provide recreational amenities.  
Goal #5: Provide public areas that have been created and already provide recreational opportunities.  
Goal #6: Neighborhood parks will be appropriately sited and designed to meet the needs of the community.  
Goal #7: Provide and enhance the aesthetics of the Eastern Goleta Valley with major emphasis on protection of resources.

**Legend**

- Eastern Goleta Valley
- Urban/Rural Boundary
- EDRN
- Existing and Proposed Trails
- Existing and Proposed Bikeways
- Regional Highways
- Roadways
- Public Parks & Reserves
- Proposed Parks
- County-Owned Property
- Scenic Buffer
- ESH
- Riparian
- Land Use Designations
- Agriculture
- Commercial
- Community Facility
- Educational Facility
- Industrial
- Institutional
- Mountainous Area
- Open Lands
- Recreation
- Residential
- Transportation Corridor
- Utility

Land Use	Acres
Residential	6,789
Commercial	111
Agriculture	13,887
Open Lands	79
Mountainous Area	17,715
Recreation	549
Community Facility	21
Educational Facility	161
Institutional	302
Utility	454



**EXISTING AND PROPOSED PARKS AND TRAILS Eastern Goleta Valley**



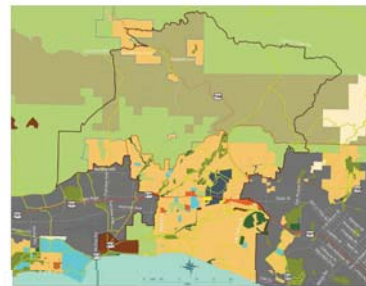
**URBAN TRAILS AND PARKS**



**EXISTING AND PROPOSED BIKE ROUTES TO PARKS**



**PARKS AND TRAILS: SOUTH OF HWY 101**



**GENERAL LAND USE & TRAILS AND PARKS**

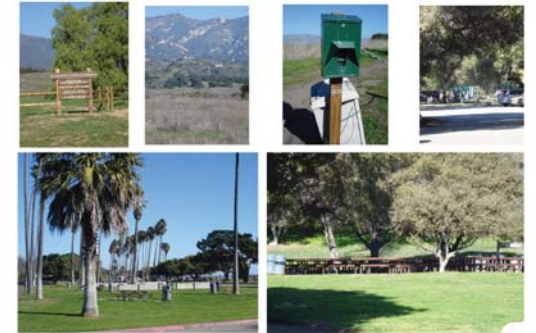


**PARKS AND TRAILS: SAN MARCOS FOOTHILLS**



**PARKS, TRAILS & ESHA/RIPARIAN OVERLAY**

Opportunities for...



Parks



Recreation



Open Spaces

Public Views

Ex: Girsh Park

## How and where do you want to the goals to be achieved?

The following list includes, but is not limited to, planning tools that have been discussed by the GVPAC during the planning process and are available for your consideration:

- 1. New parks/recreation opportunities in neighborhoods south of Hollister Ave.
- 2. New Looping Trails in Foothills/Los Padres National Forest
- 3. New Trails through San Marcos Preserve; New connections to existing trails
- 4. Streetscape, and Public space improvements
- 5. Conservation Easements and/or County land acquisitions with Recreation or Open Space designations.
- 6. Removal of physical/access barriers to parks and recreation opportunities
- 7. Recreation Master Plan linking parks/recreation with trails and bike paths
- 8. Vista Points and Parking
- 9. Development Impact Fees for parks improvements, or other funding programs (Friends of the Parks Program, Assessment District, etc)
- 10. Design Residential (DR) zoning for planned developments with open spaces, recreation facilities, and other amenities for residents.
- 11. Planned Unit Development (PUD) zoning for residential developments with open spaces, recreation facilities, and other amenities for the public.
- 12. Mixed-use projects, which combine residences and commercial spaces in the same building, to create complete neighborhoods
- 13. that provide residents access to parks and recreation opportunities, and multi-modal transportation nodes and corridors.
- 13. Mixed-use projects, which combine residences and commercial spaces in the
- same building, that provide community amenities, including plazas, parks, outdoor seating/gathering areas, and providing access to open spaces.
- 14. Other

Goleta Valley Planning Advisory Committee [GVPAC]  
Community Planning Workshop  
Saturday, July 11, 2009

Planning and Development Dept.  
Office of Long Range Planning  
County of Santa Barbara



## GVPAC Community Workshop Plan

### Parks, Recreation, Trails, and Open Space

Materials	References	Maps/Graphics	What are the Goals for...	Planning Tools	Focus Questions
<p>Pens Paper Easel(s) Barebones Table Map for notes GVC vs. GCP Walkability/Bikability Transparency Land Use Stats</p>	<p>GCP Parks and Visual Chapters</p>	<p>Bikeways, Roadways (deadends indicated), and MTD Map Parks Map Open Space Map PRD Site Plan Example Photo Array</p>	<ol style="list-style-type: none"> <li>1. Active Parks with playgrounds, ball fields, picnic areas, etc.</li> <li>2. Passive Parks with unimproved trails, habitat areas, and open spaces.</li> <li>3. Open spaces for habitat protection, views, and passive recreation</li> <li>4. Local and Regional Hiking/Biking Trails</li> <li>5. Public View Corridors</li> </ol>	<p>The following list includes, but is not limited to, tools that have been discussed by the GVPAC during the planning process and are available for your consideration:</p> <ol style="list-style-type: none"> <li>1. New parks/recreation opportunities in neighborhoods south of Hollister Ave.</li> <li>2. New Looping Trails in Foothills/Los Padres National Forest</li> <li>3. New Trails through San Marcos Preserve; New connections to existing trails</li> <li>4. Streetscape, and Public space improvements</li> <li>5. Conservation Easements and/or County land acquisitions with Recreation or Open Space designations.</li> <li>6. Removal of physical/access barriers to parks and recreation opportunities</li> <li>7. Recreation Master Plan linking parks/recreation with trails and bike paths</li> <li>8. Vista Points and Parking</li> <li>9. Development Impact Fees for parks improvements, or other funding programs (Friends of the Parks Program, Assessment District, etc)</li> <li>10. Design Residential (DR) zoning for planned developments with open spaces, recreation facilities, and other amenities for residents.</li> <li>11. Planned Unit Development (PUD) zoning for residential developments with open spaces, recreation facilities, and other amenities for the public.</li> <li>12. Mixed-use projects, which combine residences and commercial spaces in the same building, to create complete neighborhoods that provide residents access to parks and recreation opportunities, and multi-modal transportation nodes and corridors.</li> <li>13. Mixed-use projects, which combine residences and commercial spaces in the same building, that provide community amenities, including plazas, parks, outdoor seating/gathering areas, and providing access to open spaces.</li> <li>14. Other</li> </ol>	<p>Do the parks and recreation opportunities in the Eastern Goleta Valley meet the needs of the community? Where do parks, recreation, trails and open space need improvement? What goals should be included in the updated Goleta Community Plan for the parks, recreation, trails, open space and public views? Which planning tools would you like to see used to realize the goals for parks, recreation, trails, open space, and public views in the updated Goleta Community Plan?</p>

## GOLETA VALLEY COMMUNITY SURVEY Results Summary by Land Use Topic

### PARKS, RECREATION, TRAILS, OPEN SPACE, AND PUBLIC VIEWS

**please indicate on a scale of 1 to 7 how important it will be for the County of Santa Barbara to consider in its plans for the future of the Eastern Goleta Valley.**

	Favorable Rating	Neutral	Unfavorable Rating	DK/NA
Improving streetscapes, parks, and public spaces.	48%	44%	8%	0%
Protecting open space, public views, and visual resources.	76%	19%	6%	0%

**please indicate if the County is doing an excellent job, a good job, only a fair job, or a poor job.**

	Excellent Job	Good Job	Fair Job	Poor Job	DK/NA
Managing parks, recreation, trails, and public open spaces.	10%	50%	28%	8%	4%
Enhancing the character and identity of the Eastern Goleta Valley.	4%	19%	37%	25%	15%

**please indicate if you strongly agree, somewhat agree, somewhat disagree, or strongly disagree.**

	Strongly Agree	Somewhat Agree	Somewhat Disagree	Strongly Disagree	DK/NA
The parks and recreation opportunities in the Eastern Goleta Valley are plentiful and accessible.	16%	40%	28%	14%	2%

**please indicate whether you think over the next 10-20 years the County will need a lot more, some more, a little more, or no more of that building type.**

	A lot more	Some more	A little more	No more	DK/NA
Houses in planned developments with open spaces, recreation facilities, and other amenities for residents.	16%	24%	27%	30%	3%
Houses in planned developments with open spaces, recreation facilities, and other amenities for the public.	15%	20%	25%	38%	3%
Playgrounds, playing fields, picnic facilities, etc.	17%	38%	36%	9%	0%
Public Open Space and Trails.	37%	35%	21%	7%	1%
Public art/visual installations.	10%	21%	33%	33%	3%
Community centers, amphitheaters, or plazas.	9%	24%	38%	28%	1%

**please indicate if you strongly support, somewhat support, somewhat oppose, or strongly oppose the goal for the future of the Eastern Goleta Valley.**

	Strongly support	Somewhat support	Somewhat oppose	Strongly oppose	DK/NA
Protecting local open space and natural resources, including wetlands, creeks, trails, active and passive parks, and beach access from encroachment by built environment.	76%	18%	3%	3%	0%
Increasing amount of public active and passive recreation, trails and open space.	53%	35%	9%	2%	1%
Requiring new development and redevelopment to protect and/or enhance public views.	51%	34%	7%	6%	2%

**The parks and recreation opportunities in the Eastern Goleta Valley are plentiful and accessible.**

