

# PUBLIC SAFETY, SERVICES, AND INFRASTRUCTURE

## FOCUS QUESTIONS

Which Public Safety, Services, and/or Infrastructure sufficiently serve the Eastern Goleta Valley?

Which Public Safety, Services, and/or Infrastructure insufficiently serve the Eastern Goleta Valley?

What are the goals for Public Safety, Services, and/or Infrastructure?

The following list includes, but is not limited to, opportunities that have been discussed by the GVPAC during the planning process and are available for your consideration:

1. Hazardous Materials Management/Emergency Services
2. Water Supply
3. Wastewater Treatment
4. Resource Recovery and Solid Waste Management
5. Historic and Archaeological Resources
6. Fire Services
7. Law Enforcement
8. Schools
9. Emergency/Disaster Services

**History/Archaeology**  
Goleta Community Plan  
Principles:  
To identify, evaluate, and protect historic and archaeological resources and to integrate their preservation into the community plan.

**GOCA 2009 Vision Statement:**  
The vision of the Eastern Goleta Valley is to be a vibrant, sustainable, and resilient community that respects its history and natural resources while embracing innovation and progress.

**Water, Wastewater, and Solid Waste**  
Goleta Community Plan Principles  
To provide a comprehensive and integrated approach to water, wastewater, and solid waste management that ensures the long-term sustainability and resilience of the community.

**GOCA 2009 Vision Statement:**  
The vision of the Eastern Goleta Valley is to be a vibrant, sustainable, and resilient community that respects its history and natural resources while embracing innovation and progress.

**Water, Wastewater, and Solid Waste**  
GOCA 2009 Vision Statement:  
The vision of the Eastern Goleta Valley is to be a vibrant, sustainable, and resilient community that respects its history and natural resources while embracing innovation and progress.

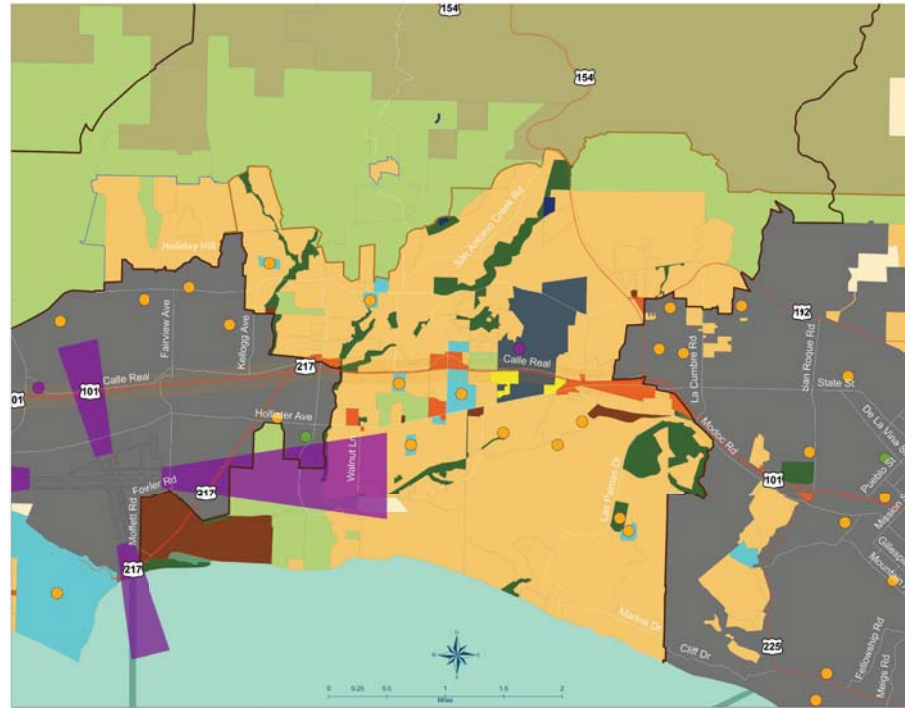
How and where do you want to the goals to be achieved?

The following list includes, but is not limited to, planning tools that have been discussed by the GVPAC during the planning process and are available for your consideration:

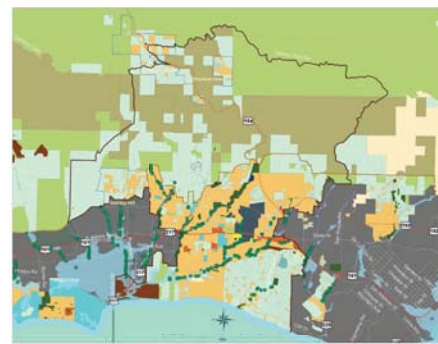
1. Low Impact Development Standards.
2. Water-conserving technologies and development standards.
3. Recycling/Greenwaste/Composting Facilities.
4. Removing barriers to emergency responders, such as gates, road blocks, dead ends, etc.
5. Requiring adequate ingress and egress for all new development.
6. Limiting new development to urban area near public services, distanced from wildfire hazards.
7. Development Impact Fees for fire department and sheriff facilities.
8. New retention/detention basins
9. Stealth communication towers and aesthetically-pleasing utility facilities
10. New Underground utilities, including electric and communication cables
11. Recycled/Greywater facilities for public, commercial, and residential developments
12. Benefit Assessment Districts for public facilities/utilities
13. Design Guidelines and Development Standards for emergency/disaster preparedness
14. Traffic Calming and Safety measures for cyclists and pedestrians
15. Other

**Legend**

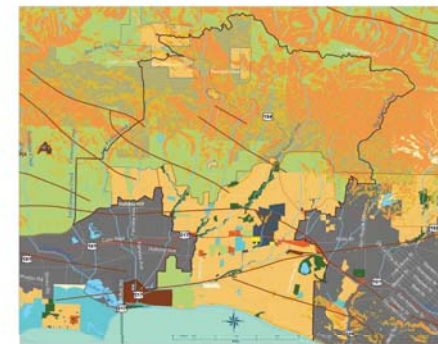
- Eastern Goleta Valley
- Urban/Rural Boundary
- EDRN
- Hospitals
- Police Stations
- Schools
- Proposed County Fire Stations
- County Fire Stations
- Faults
- Roadways
- Regional Highways
- Hwy 101 Buffer (500ft)
- 5-minute Response Zone
- Fire Hazard Code
  - Moderate
  - High
  - Severe
- Flight Approach Zones
- Flooding, Drainage, Hydrology
  - Waterways
  - Streams
  - Flood Hazard (100 yr)
  - Regional Retention Basin
  - Runoff Outfalls
  - Septic Systems
- Geology & Land
  - 40% Slope
  - 30% Slope
- Land Use Designations
  - Agriculture
  - Commercial
  - Community Facility
  - Educational Facility
  - Industrial
  - Institutional
  - Mountainous Area
  - Open Lands
  - Recreation
  - Residential
  - Transportation Corridor
  - Utility



**EXISTING SERVICES AND GENERAL LAND USE**  
Eastern Goleta Valley

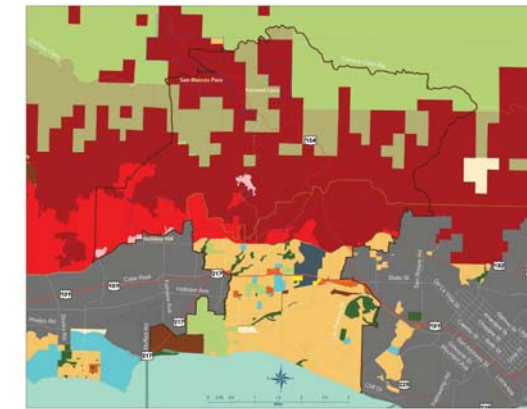


**FLOODING, DRAINAGE, AND SEPTIC SYSTEMS**

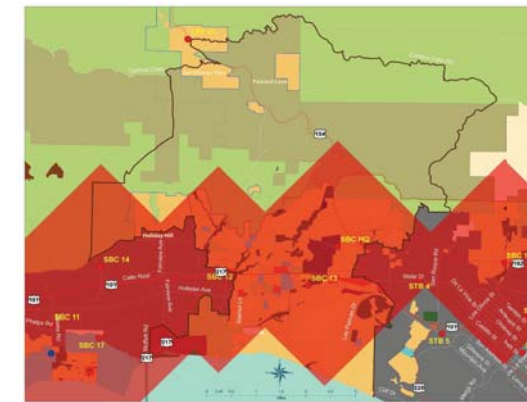


**GEOLOGY AND FAULTS**

Land Use	Acres
Residential	6,789
Commercial	111
Agriculture	13,087
Open Lands	79
Mountainous Area	17,715
Recreation	549
Community Facility	21
Educational Facility	161
Institutional	302
Utility	454



**CALIFORNIA STATE FIRE HAZARD ZONES**



**FIRE STATIONS AND 5-MINUTE RESPONSE ZONES**

**Wastewater**

GOLETA  
Sanitary District  
1000 Highway 101  
Goleta, CA 93040  
805.964.1100  
www.goleta.org

GO ANNUAL AVERAGE INFLENT FLOWS  
1991 TO 2008

**Water Supply**

**WATER DEMAND (acre-feet)**

**Fire Services, Law Enforcement, Emergency Services, Waste Management**

**Population to FF Ratio**

- 2000:1 Pop to FF ratio = "Ideal"
- 3000:1 Pop to FF ratio = "Good"
- 4000:1 Pop to FF ratio = "Absolute Maximum Population that can be adequately served"

STATION	2008 CALL TOTALS	POPULATION
Station 11	924	21,594
Station 12	1,526	16,025
Station 13	1,443	20,669
Station 14	418	5,960
Station 17	904	14,895



## GVPAC Community Workshop Plan

### Public Safety, Services, and Infrastructure

Materials	References	Maps/Graphics	What are the Goals for...	Planning Tools	Focus Questions
<p>Pens Paper Easel(s) Barebones Table Map for notes GVC vs. GCP Walkability/Bikability Transparency</p>	<p>GCP Services Chapters</p>	<p>High Fire Hazard Area Flood Maps Faultlines Schools, Wastewater, Water, etc maps</p>	<ol style="list-style-type: none"> <li>1. Hazardous Materials Management/Emergency Services</li> <li>2. Water Supply</li> <li>3. Wastewater Treatment</li> <li>4. Resource Recovery and Solid Waste Management</li> <li>5. Historic and Archaeological Resources</li> <li>6. Fire Services</li> <li>7. Law Enforcement</li> <li>8. Schools</li> <li>9. Emergency/Disaster Preparedness</li> </ol>	<p>The following list includes, but is not limited to, tools that have been discussed by the GVPAC during the planning process and are available for your consideration:</p> <ol style="list-style-type: none"> <li>1. Low Impact Development Standards.</li> <li>2. Water-conserving technologies and development standards.</li> <li>3. Recycling/Greenwaste/Composting Facilities.</li> <li>4. Removing barriers to emergency responders, such as gates, road blocks, dead ends, etc.</li> <li>5. Requiring adequate ingress and egress for all new development.</li> <li>6. Limiting new development to urban area near public services, distanced from wildfire hazards.</li> <li>7. Development Impact Fees for fire department and sheriff facilities.</li> <li>8. New retention/detention basins</li> <li>9. Stealth communication towers and aesthetically-pleasing utility facilities</li> <li>10. New Underground utilities, including electric and communication cables</li> <li>11. Recycled/Greywater facilities for public, commercial, and residential developments</li> <li>12. Benefit Assessment Districts for public facilities/utilities</li> <li>13. Design Guidelines and Development Standards for emergency/disaster preparedness</li> <li>14. Traffic Calming and Safety measures for cyclists and pedestrians</li> <li>15. Other</li> </ol>	<p>Which public safety, services, and/or infrastructure sufficiently serve the Eastern Goleta Valley? Which public safety, services and/or infrastructure do not sufficiently serve the Eastern Goleta Valley? What goals should be included in the updated Goleta Community Plan for the public safety, services and infrastructure? Which planning tools would you like to see used to realize the goals for public safety, services and infrastructure in the updated Goleta Community Plan?</p>

## GOLETA VALLEY COMMUNITY SURVEY Results Summary by Land Use Topic

### PUBLIC SAFETY, SERVICES, AND INFRASTRUCTURE

**please indicate if the County is doing an excellent job, a good job, only a fair job, or a poor job.**

	Excellent Job	Good Job	Fair Job	Poor Job	DK/NA
Public safety services, including sheriff, fire, emergency response and preparedness.	27%	53%	15%	1%	4%
Enhancing the character and identity of the Eastern Goleta Valley.	4%	19%	37%	25%	15%
Promoting water quality and supply.	9%	36%	32%	7%	16%

**please indicate if you strongly agree, somewhat agree, somewhat disagree, or strongly disagree.**

	Strongly Agree	Somewhat Agree	Somewhat Disagree	Strongly Disagree	DK/NA
The County of Santa Barbara has done a good job maintaining and enhancing the public services and facilities of the Eastern Goleta Valley, such as fire, sheriff, and emergency response services.	27%	52%	9%	4%	8%

**please indicate whether you think over the next 10-20 years the County will need a lot more, some more, a little more, or no more of that building type.**

	A lot more	Some more	A little more	No more	DK/NA
Schools.	4%	10%	33%	46%	7%
Public safety and emergency services and facilities.	13%	35%	38%	9%	5%

