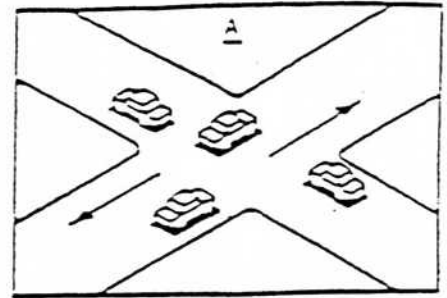


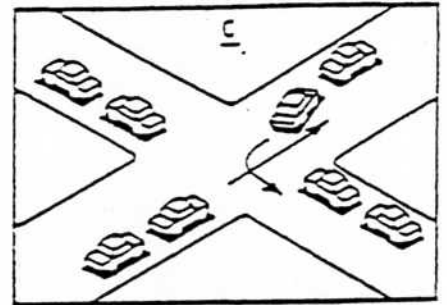
LEVEL OF SERVICE 'A'

- ✦ Volume/capacity ratio = 0 to 0.60
- ✦ Free flow conditions
- ✦ No vehicle waits longer than one signal indication



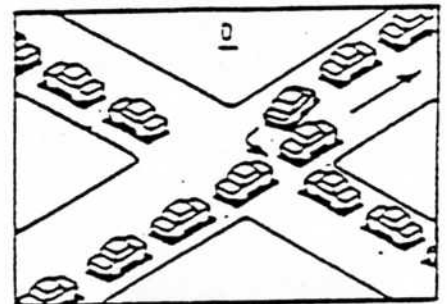
LEVEL OF SERVICE 'B'

- ✦ Volume/capacity ratio = 0.61 to 0.70
- ✦ Stable traffic flow
- ✦ Motorist rarely wait through more than one signal indication



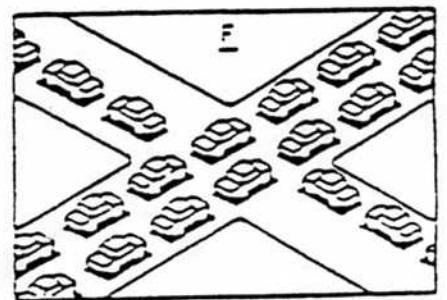
LEVEL OF SERVICE 'C'

- ✦ Volume/capacity ratio = 0.71 to 0.80
- ✦ Stable and acceptable flow but speed and maneuverability somewhat restricted due to higher volumes
- ✦ Motorists intermittently wait through more than one signal indication
- ✦ Occasional backups behind left turn vehicles



LEVEL OF SERVICE 'D'

- ✦ Volume/capacity ratio = 0.81 to .90
- ✦ Extensive delays at times
- ✦ Some motorists, especially left turners, may wait through one or more signal indications, but enough cycles with lower demand occur to prevent excessive backups
- ✦ Maneuverability restricted



LEVEL OF SERVICE 'E'

- ✦ Volume/capacity ratio = 0.9 to 1.00
- ✦ Very long queues may create lengthy delays, especially for left turning vehicles
- ✦ Volume at or near capacity
- ✦ Unstable flow

LEVEL OF SERVICE 'F'

- ✦ Volume/capacity ratio = 1.01 or greater
- ✦ Backups from locations downstream restrict movement at intersection approaches
- ✦ Forced flow conditions
- ✦ Stoppage for long periods due to congestion
- ✦ Volumes drop to zero in extreme cases