

MAY 6, 2006



GOLETA VISIONING COMMITTEE WORKSHOP #6

AGRICULTURE, GROWTH AND DEVELOPMENT

COUNTY OF SANTA BARBARA PUBLIC WORKS DEPARTMENT
TRANSPORTATION DIVISION

MAY 6, 2006



Overview

- Public Works Department
 - Transportation Division
 - Traffic Section
 - Transportation Planning
 - Alternative Transportation



MAY 6, 2006



Public Works Department



MAY 6, 2006



Transportation Division

Mission Statement:

To provide a clear path, smooth ride and safe trip to the traveling public.



COUNTY OF SANTA BARBARA PUBLIC WORKS DEPARTMENT
TRANSPORTATION DIVISION

MAY 6, 2006



Transportation Division

The County's Transportation Infrastructure System:

- 1,667 Lane miles of asphalt pavement
- 110 Major bridge structures
- 48 Traffic signals throughout the County
- Over 15,000 street trees
- Concrete hardscape improvements
- Over 4,100 drainage facilities



MAY 6, 2006



Transportation Division

Operation Sections

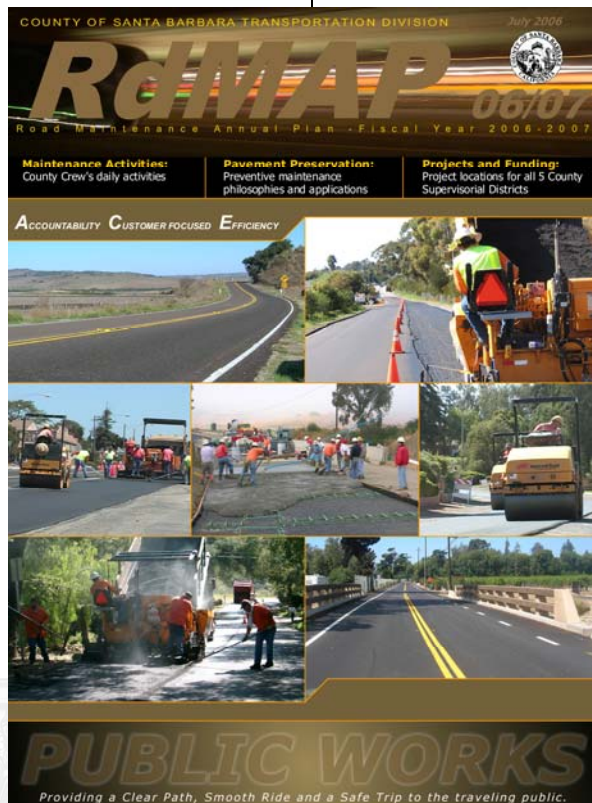
Administration

Maintenance

Engineering

Construction
& Permits

Traffic

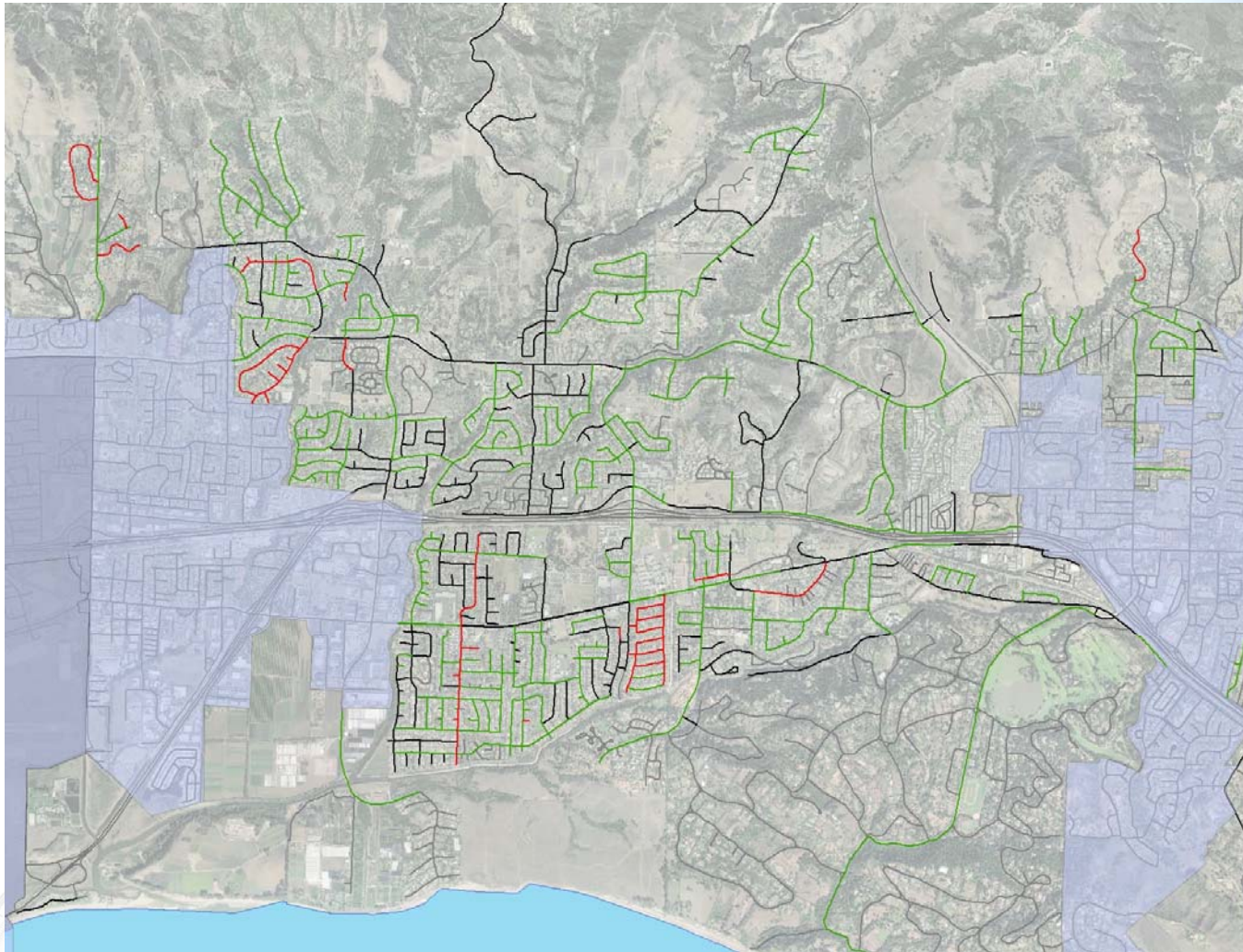


COUNTY OF SANTA BARBARA PUBLIC WORKS DEPARTMENT
TRANSPORTATION DIVISION

MAY 6, 2006



Transportation Division **Transportation Infrastructure System** **Second District System:**



- Average PCI of 72
- 14 % of County's Total Pavement Area
- 14 Traffic Signals, 6 Flashing Beacons, 160 Bikeways Lights
- Approx. 1,000 Street Trees
- Numerous Drainage And Hardscape Facilities

MAY 6, 2006



Transportation Division

Traffic Section

Operations

- Signing & Striping
- Signal Operations
- School Zone Safety
- Maintenance of Accident and Traffic Count Databases

Transportation Planning

- Travel Forecast Modeling
- Traffic Simulation Modeling
- Development Review
- Plan Check Functions

Alternative Transportation

- Coordination w/ Transit Providers & Other Agencies
- Management of County Bikeways
- Securing of Grants and Other Funding for Alternative Transportation



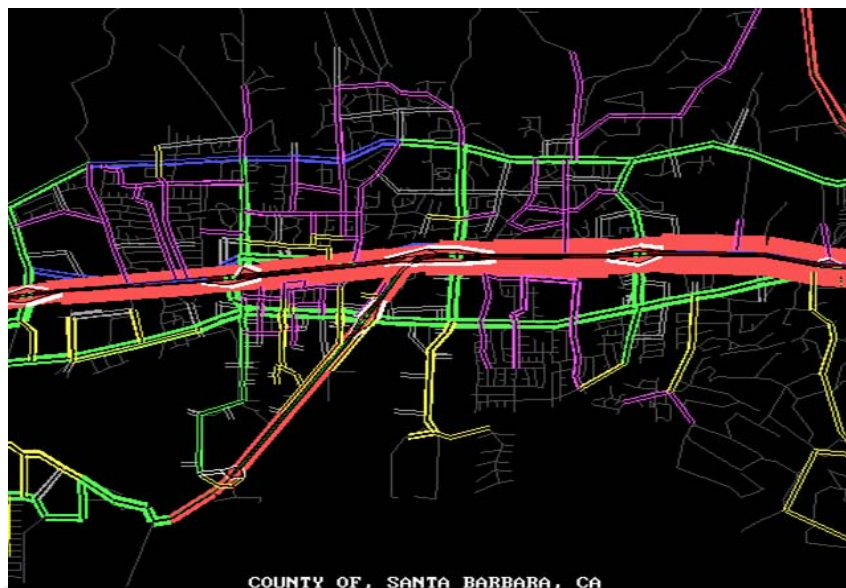
MAY 6, 2006



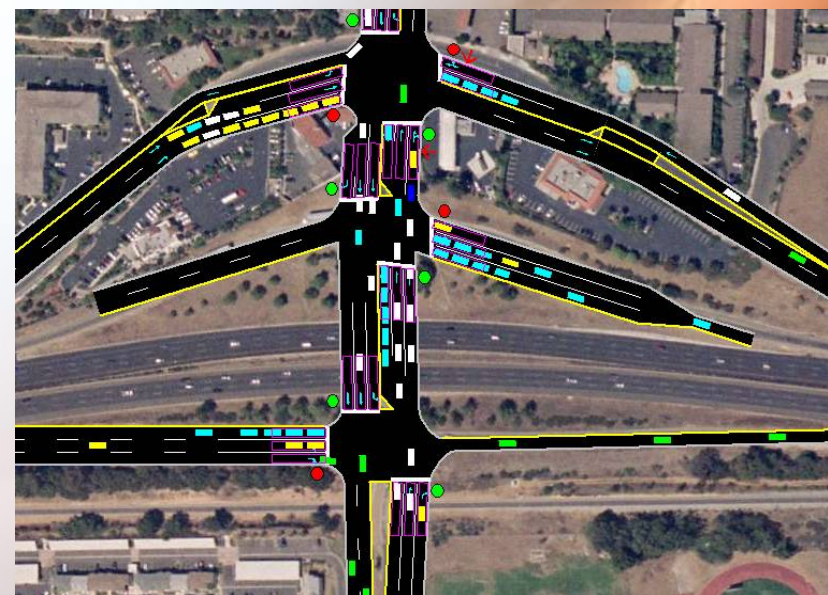
Transportation Division

Traffic Section –Transportation Planning

Travel Forecast Modeling



Traffic Simulation Modeling





Transportation Division

Traffic Section – Transportation Planning



MAY 6, 2006



Transportation Division

Traffic Section –Transportation Planning

TRANSPORTATION IMPROVEMENT PLAN (TIP)

- Lists transportation improvements, costs and sources of funding required to serve new development
- Contains an “impact fee” to help mitigate impacts from new development
- Relies on land use information developed for the General Plan
- Following adoption of a revised General Plan, a new TIP will be prepared for unincorporated Goleta



MAY 6, 2006



Transportation Division

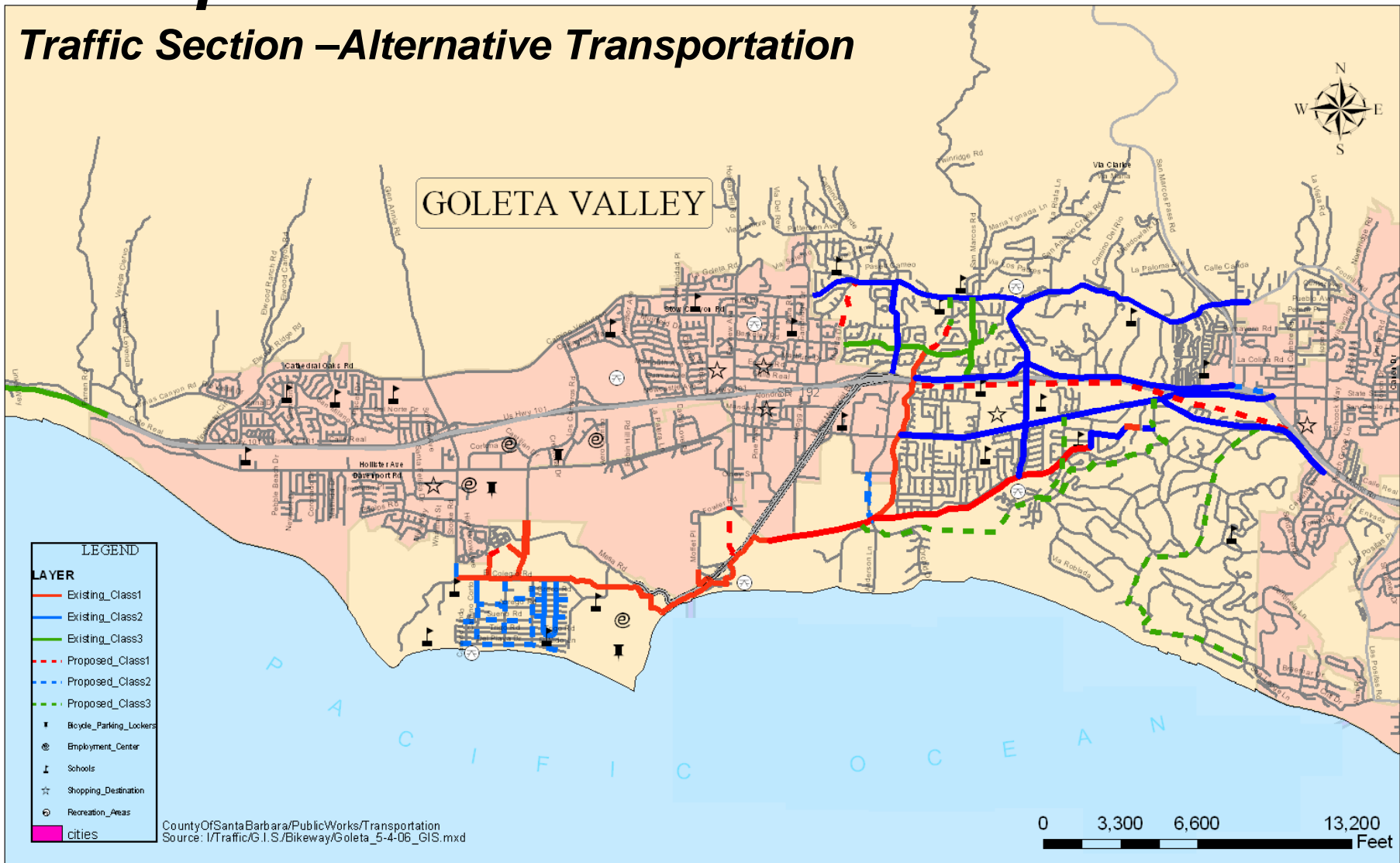
Traffic Section Alternative Transportation



COUNTY OF SANTA BARBARA PUBLIC WORKS DEPARTMENT
TRANSPORTATION DIVISION

Transportation Division

Traffic Section –Alternative Transportation



MAY 6, 2006



Thank You

GOLETA VISIONING COMMITTEE WORKSHOP #6

AGRICULTURE, GROWTH AND DEVELOPMENT

Q & A

COUNTY OF SANTA BARBARA PUBLIC WORKS DEPARTMENT
TRANSPORTATION DIVISION