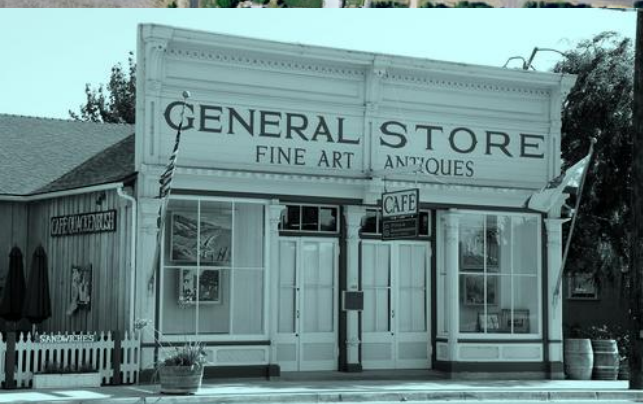
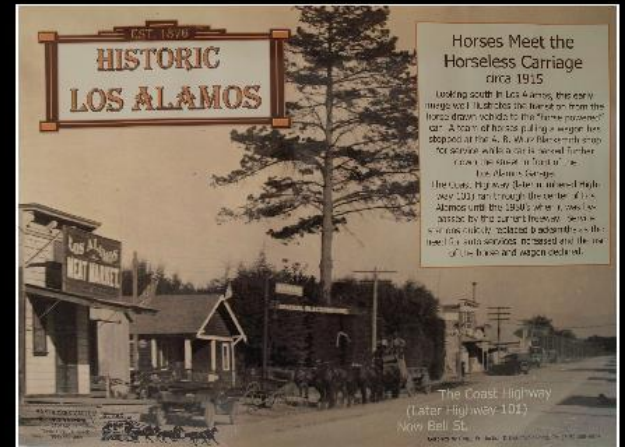


Los Alamos Planning Advisory Committee Meeting



**Los Alamos
Senior Center
March 18, 2010**



Agenda

- 1: Pledge of Allegiance and Roll Call**
- 2: Public Comment Period - Items Not on the Agenda**
- 3: a. Minutes of the February 27, 2010 meeting**
 - b. Staff Report - Items of Interest to the LAPAC**
- 4: Los Alamos Community Plan Update-Final Review**
- 5: Policy Revisions – Meetings #1 and #2**
- 6: Los Alamos Community Plan Recommendation**
- 7: LAPAC to Consider Communication with Verizon**

Adjourn



Los Alamos Planning Advisory Committee Meeting

Agenda Item 2:

- Public Comment Period for Items not on the agenda



Los Alamos Planning Advisory Committee Meeting

Agenda Item 3:

- **LAPAC Review of February 27, 2010 Meeting Minutes**



Los Alamos Planning Advisory Committee Meeting

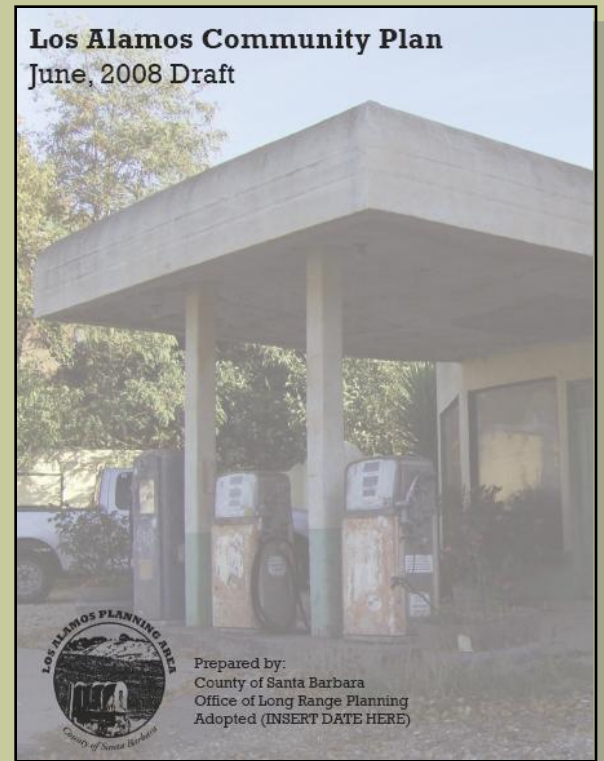
Agenda Item 3: Items of Interest

- **The Children's Project Academy**
- **690 Bell Street
Mixed use**



Los Alamos Planning Advisory Committee Meeting

Agenda Item 4 – Los Alamos Community Plan Update Final Policy Review

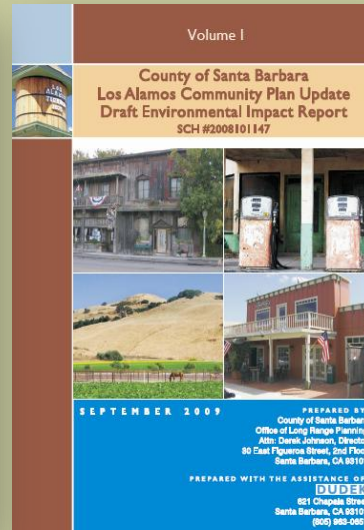


Los Alamos Planning Advisory Committee Meeting

Draft Plan

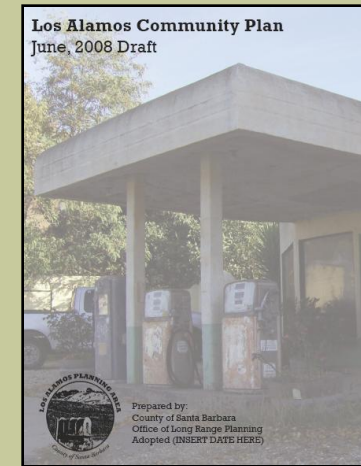


EIR



LAPAC Recommended Final Plan

➔
**Mitigation
and
Policy
Revisions**
➔



➔
**Planning
Commission**
➔

➔
**Board of
Supervisors**



OFFICE OF LONG RANGE PLANNING



Los Alamos Planning Advisory Committee Meeting

- Final Plan Policy Review -



Meeting #1: Jan. 28

- ❖ **Agriculture**
- ❖ **Historic and Cultural Resources**
- ❖ **Parks and Recreation**
- ❖ **Police**
- ❖ **Schools**
- ❖ **Visual/Open Space/Design**
- ❖ **Noise**

Meeting #2: Feb. 27

- ❖ **Water and Wastewater**
- ❖ **Fire/Public Services**
- ❖ **Resource Recovery**
- ❖ **Transportation and Parking**
- ❖ **The CMLA Zone District**
 - Permitting Threshold

Meeting #3: Tonight

- ❖ **CMLA Continued**
 - Allowable Uses
 - CM-LA Zone Boundary
- ❖ **Land Use Policy**
- ❖ **Public Facilities and Services**
- ❖ **Air Quality**
- ❖ **Flooding**
- ❖ **Biological Resources**

COMPLETED

Blue text indicates Jan. 28 policy refinement -
Red text indicates Feb. 27 policy refinement -



Los Alamos Planning Advisory Committee Meeting

Motion:

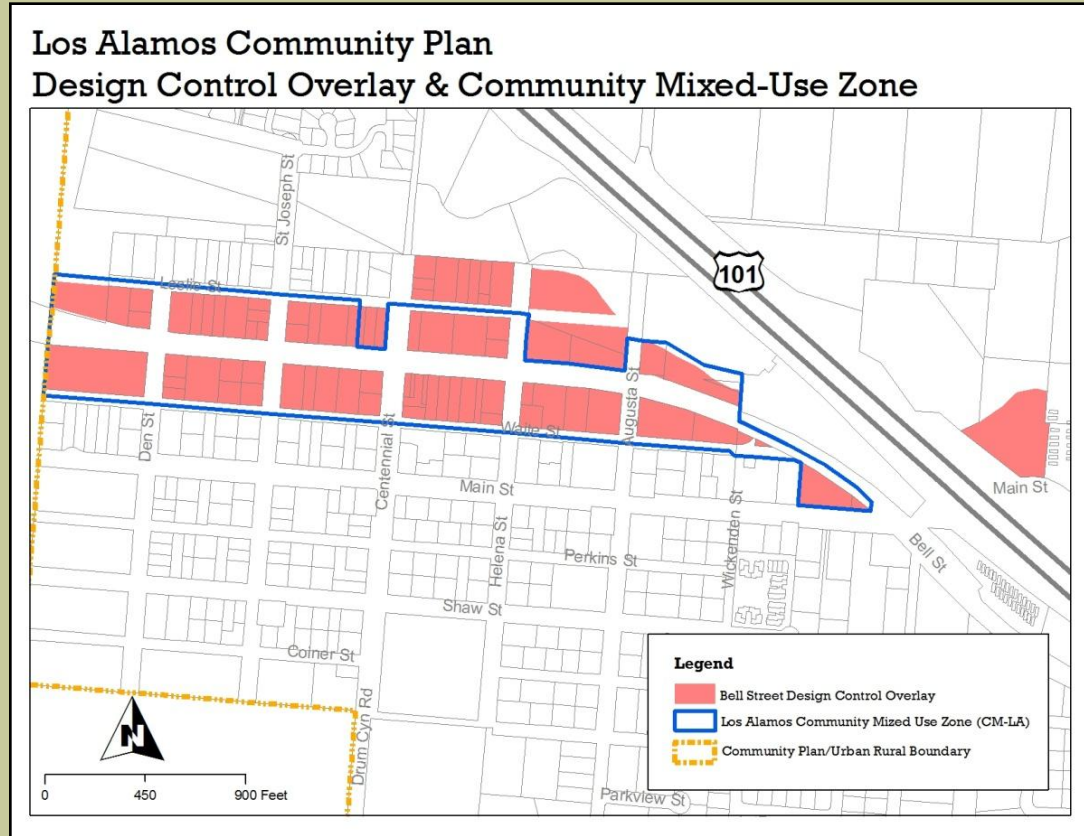
Conceptually recommend the Planning Commission and Board of Supervisors adopt the LACP “**topic**” policies and implementing measures, “***as amended at the February 27th LAPAC meeting.***”



Los Alamos Planning Advisory Committee Meeting

Community Mixed Use (CM-LA) Zone District

- Allowable Uses
- CM-LA Zone Boundary



Los Alamos Planning Advisory Committee Meeting

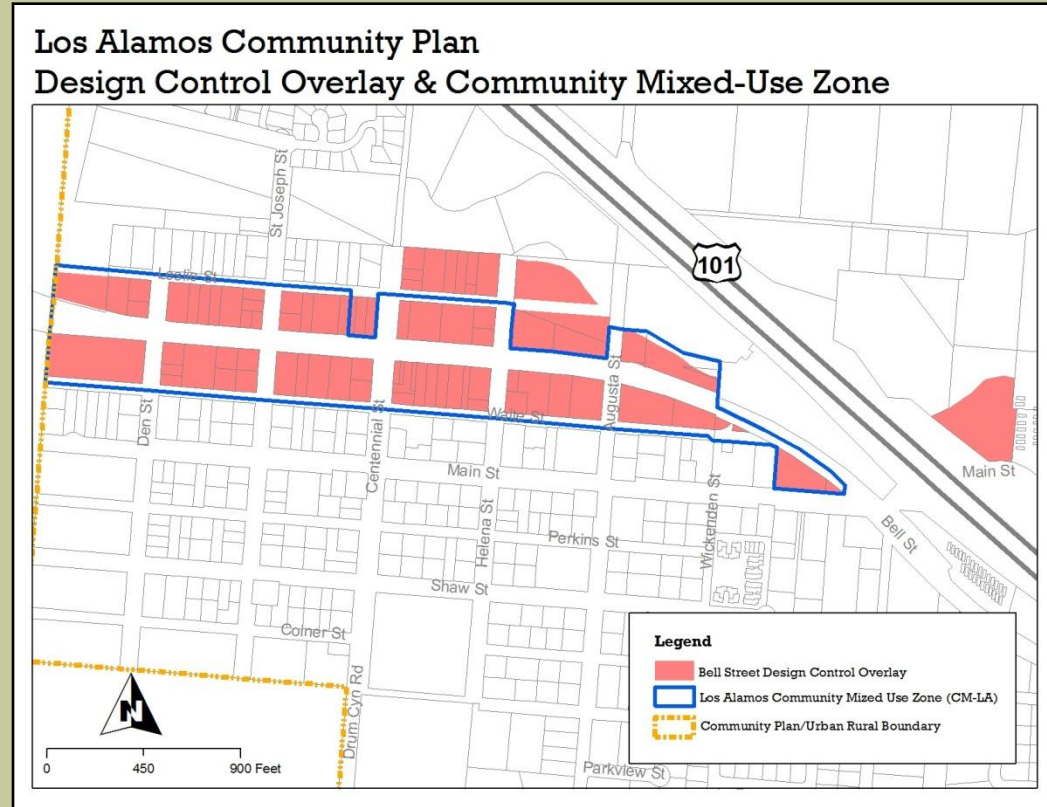
CM-LA Zone District Allowable Uses



Conceptual Motion

Community Mixed Use (CM-LA) Zone District

- CM-LA Zone District
LUDC Amendments
- CM-LA Zone Boundary
- Bell Street Design
Guidelines



Key Land Use and Zone Changes

Burtness

- Split Zone (CH & 1-E-1)
- CH to C-2
- Located north of 101
- Design Overlay

Thompson

- DR-8 to C-3
- Located south of 101



LOS ALAMOS COMMUNITY PLAN ZONING

RESIDENTIAL:

RR-5 Residential Ranchette, 5 Acre Minimum Lot Size

Single Family Residential:

3-E-1 3 Acres (Gross) Minimum Lot Size

1-E-1 1 Acre (Gross) Minimum Lot Size

10-R-1 10,000 Sq. Ft. (Net) Minimum Lot Size

7-R-1 7,000 Sq. Ft. (Net) Minimum Lot Size

Multiple Family Residential:

7-R-2 Two Family, 7,000 Sq. Ft. (Net) Minimum Lot Size

10-R-2 Two Family, 10,000 Sq. Ft. (Net) Minimum Lot Size

DR-1.8 Design Residential, 1.8 Units per Gross Acre

DR-4.6 Design Residential, 4.6 Units per Gross Acre

DR-8 Design Residential, 8 Units per Gross Acre

PRD-46 Planned Residential Development, 46 Units

MHP Mobile Home Park

COMMERCIAL:

C-1 Limited Commercial

C-2 Retail Commercial

C-3 General Commercial

CH Highway Commercial

PI Professional and Institutional

RESIDENTIAL/COMMERCIAL:

CM-LA Community Mixed Use - Los Alamos

INDUSTRIAL:

M-1 Light Industry

OPEN LAND USES:

REC Recreation

BOUNDARY LINES:

Zoning Boundary

Community Plan Boundary

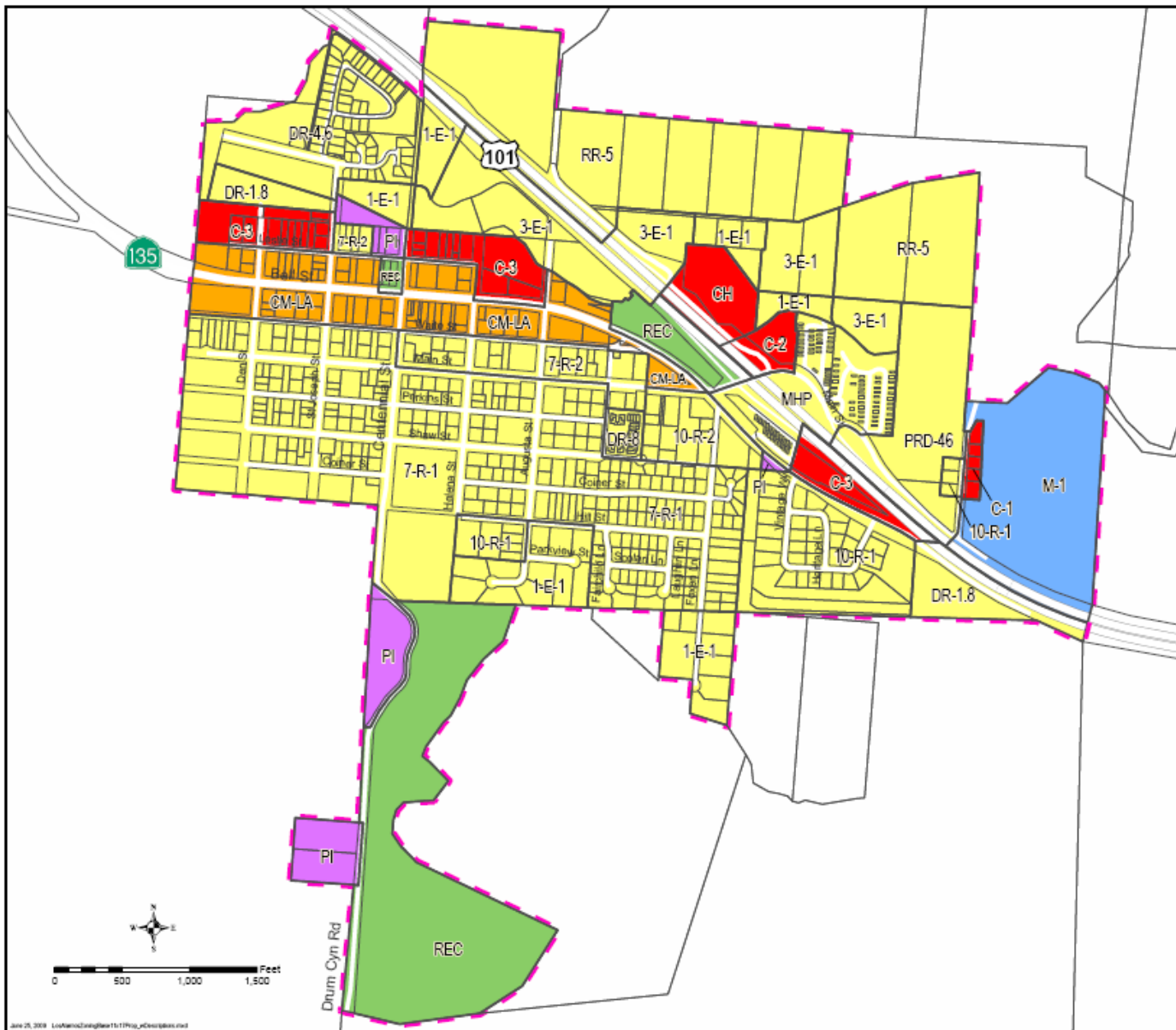


Figure 10



Los Alamos Planning Advisory Committee Meeting

Flooding



Conceptual Motion

Flooding

- **LAPAC Question and Answers**
- **Public Comment**
- **Conceptual Motion**



Los Alamos Planning Advisory Committee Meeting

Land Use Policies

General

Residential

Commercial

Industrial

Public Facilities and Services Policies

