


Mission Canyon Planning Advisory Committee
Residential Parking Strategy
Meeting



Santa Barbara County
Planning Commission
Hearing Room
July 22, 2009

Meeting Agenda

- Role Call
- General Public Comment
- MCPAC Administrative Tasks
 - New MCPAC Member
 - Minutes
 - Status Updates
 - Subcommittee Appointment
- Residential Parking Strategy
- Adjourn



Project Staff

- Office of Long Range Planning
 - Derek Johnson
 - Peter Imhof
 - Rosie Dyste
 - Greg Wiley
- Public Works
 - Gary Smart
- Fire Department
 - Glenn Fidler



MCPAC Administrative Tasks

- MCPAC Member Oath of Office
- Minutes of June 30, 2009
- Status Updates



Status Updates: Historic Survey Sample Page

MISSION CANYON HISTORIC SITE RECORD

ADDRESS: **2990 Foothill Rd** APN: 023-162-034

ALTERNATE ADDRESS: 2926 Laurel Canyon Rd (pre-1951) and 3005 Lauro Canyon Rd (1929-1938) SURVEY DATE: 1/30/2009

CURRENT OWNER & ADDRESS: **Judith Mouderrres** DATE BUILT: 1924
2990 Foothill Rd, Santa Barbara CA 93105

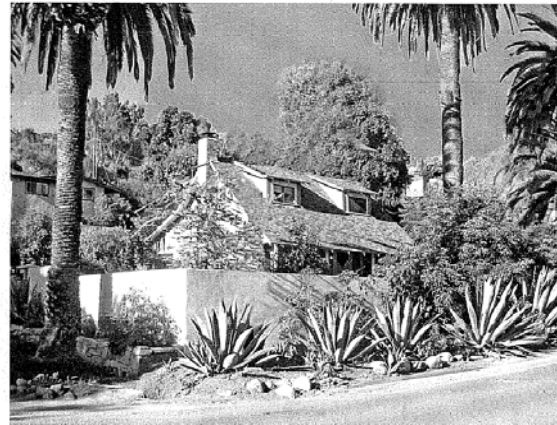
TYPE OF STRUCTURE OR SITE: Residence

SIGNIFICANCE / CRITERIA: Age, Assessor says structure dates from 1870.

RESOURCES: County Assessor Records; City Directories; Architectural Foundation Archives; Site Visit; interview with former owners

FORMER OWNERS & OCCUPANTS: Ludwig A. Herziger (1951-58); Sally Herziger (1967); Margaret Gordon & Elizabeth Dodd (2000)

This charming farmhouse cottage at 2990 Foothill Road, with its classic front porch, leaded glass window, and original decorative moldings, was built in 1924, and survived the '25 earthquake intact. The house has been updated with solar tubes and skylights for natural lighting on the north side, and includes a guest house and jacuzzi.



Status Updates

- Jesusita Fire Emergency Watershed Response Plan
- Burn Area Emergency (BAER) Report
- Foothill Road No Parking Zone

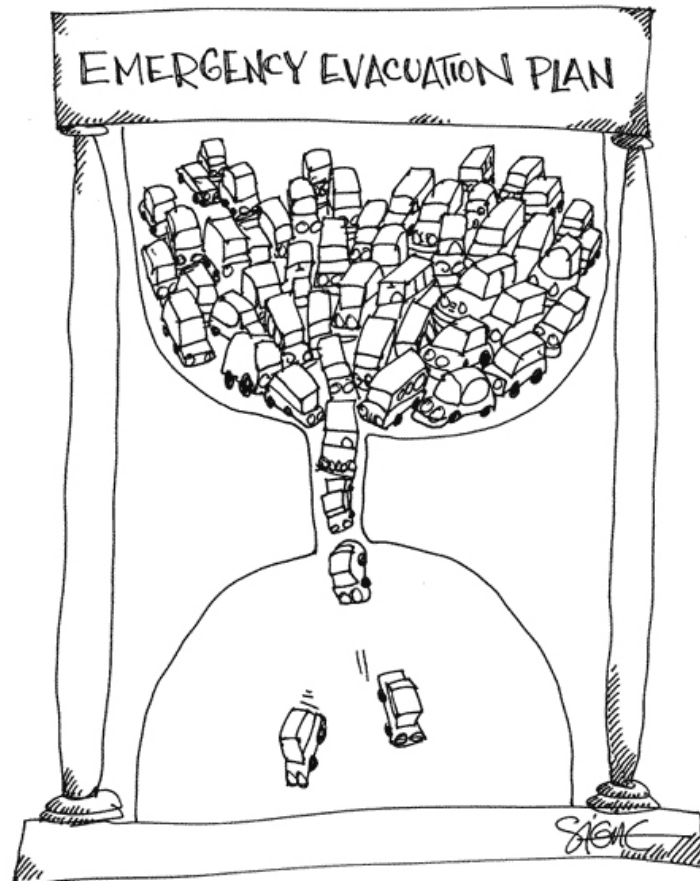


Status Updates

- Consider Appointment of Residential Parking Strategy Subcommittee



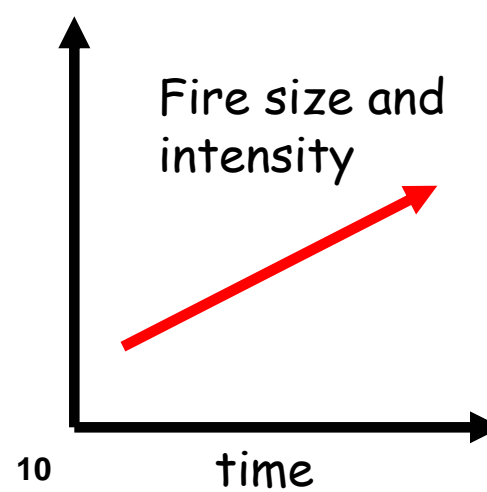
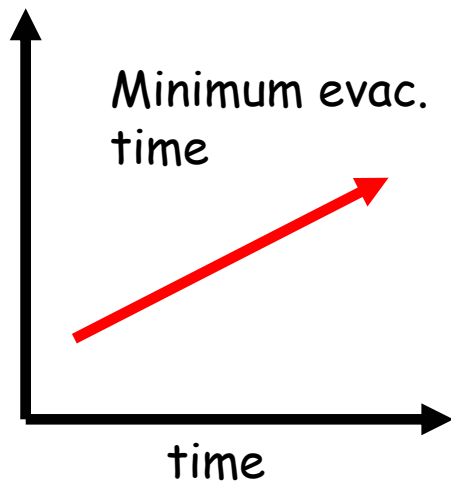
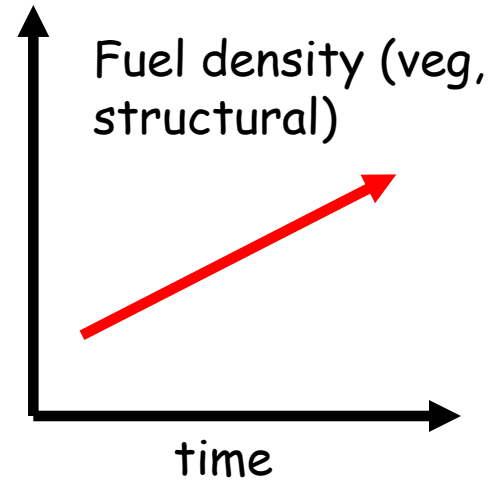
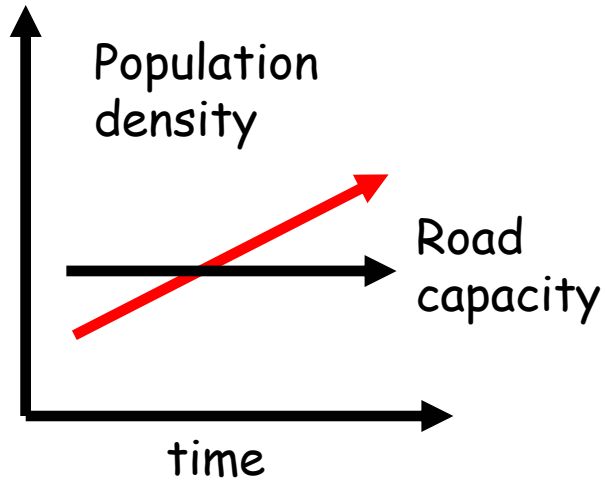
Parking Strategy Project Discussion



Draft Community Plan Goals and Action

- “GOAL CIRC-MC-1: Achieve safe roadways and improve pedestrian and bicycle passage, while maintaining the community character and aesthetic qualities of Mission Canyon.”
- “GOAL CIRC-MC-2: Provide an efficient and safe circulation system with adequate access for emergency vehicles and safe emergency egress for residents and visitors.”
- “Action CIRC-MC-3.2: Planning & Development Department shall work with Public Works, County Fire Department, and area residents to develop a residential parking strategy for areas of Mission Canyon where traffic flow is constrained due to on-street parking on narrow streets. An implementation strategy shall be developed to ensure safe ingress and egress within a very high fire hazard area.”

Trends in the Wildland-Urban Interface



Slide from presentation by Tom Cova

Wildfire Emergency Planning in Mission Canyon

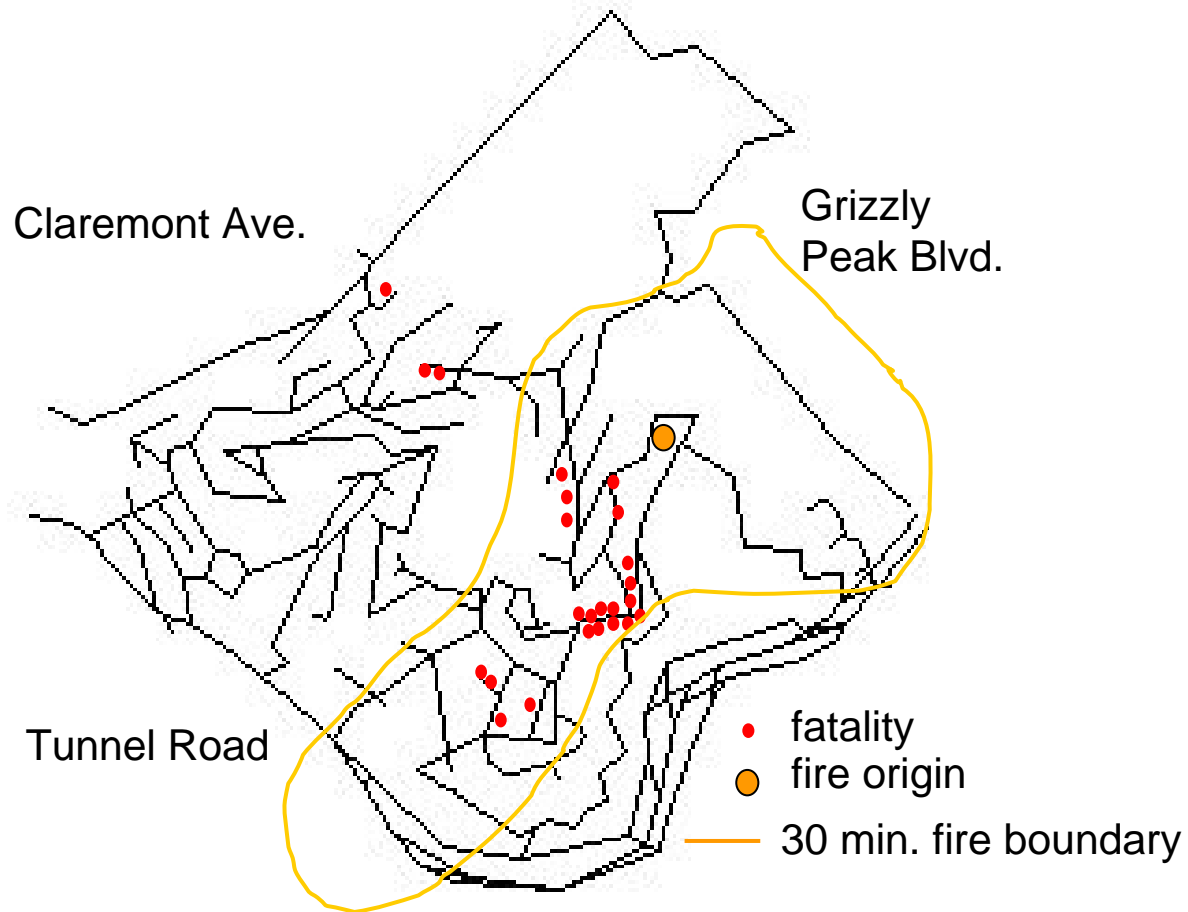
Oakland Fire - October 1991



Slide from presentation by Tom Cova

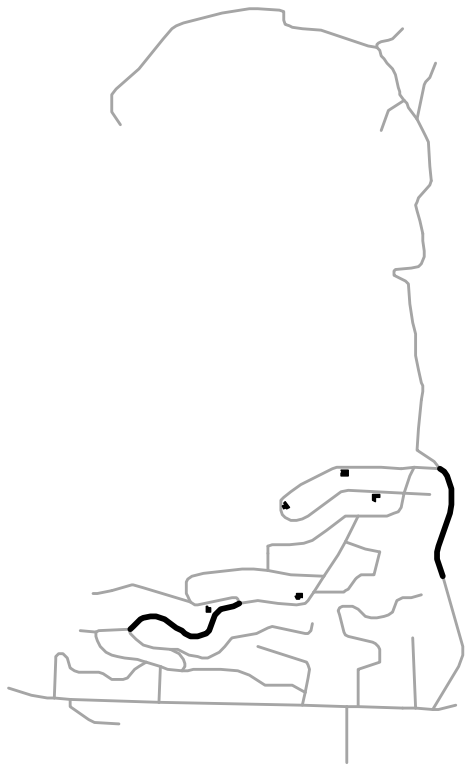
Wildfire Emergency Planning in Mission Canyon

Oakland Fire warning time < 30 minutes



Mission Canyon Development History





1938

6 homes

2 exits



1990

420+ homes

2 exits



2007

Data

Approx. 27 new homes since
1990 for a total of 447

No new exits

1938 and 1990 data from presentation by Tom Cova:

Wildfire Emergency Planning in Mission Canyon

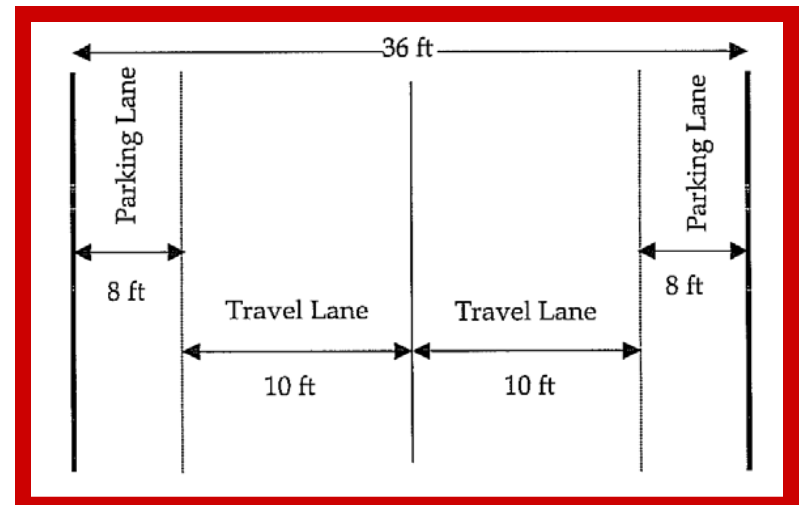
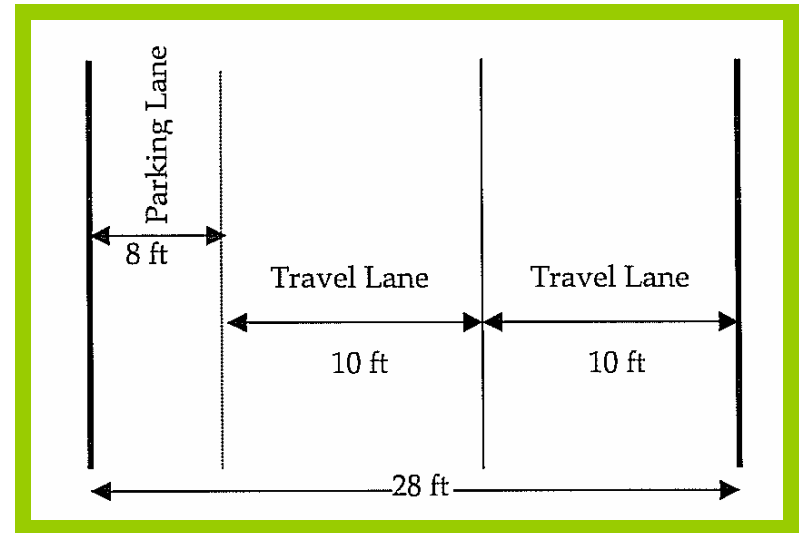
Oakland Hills and Upper Mission Canyon Comparison

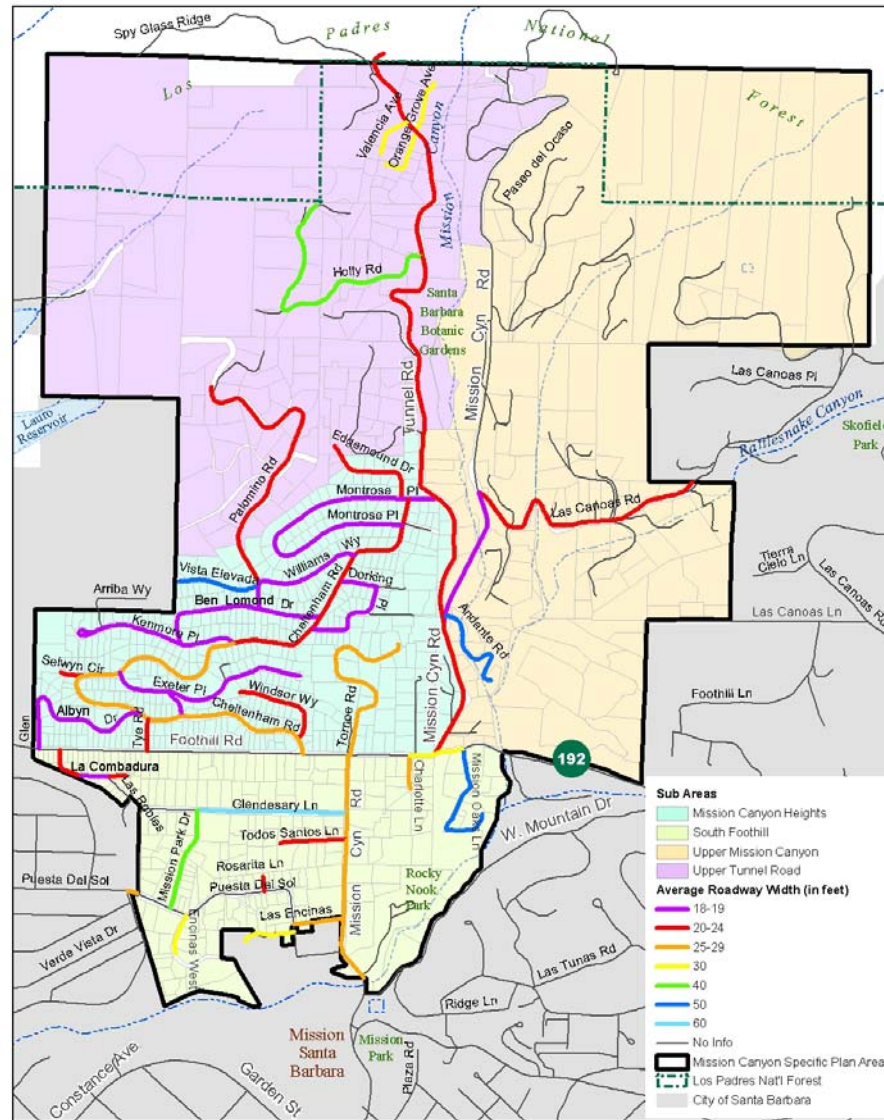
Oakland Hills	Upper Mission Canyon
“Maze of narrow streets”	Narrow, winding streets
Four Exits	Two Primary Exits
Wood structures intermixed with flammable vegetation – many not compliant with current Fire Code Building Standards	Wood structures intermixed with flammable vegetation – many not compliant with current Fire Code Building Standards
Steep topography	Steep topography
Adjacent to Open Space Parks	Adjacent to National Forest
Very High Fire Hazard Severity Zone	Very High Fire Hazard Severity Zone ¹⁵

Road Widths and Parking

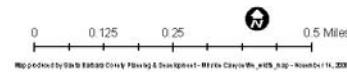
Per Ca Fire Code Section 503.2.1 *“Fire apparatus access roads shall have an unobstructed width of not less than 20 feet...”*

No Parking zones must be designated by resolution and posted to be enforceable

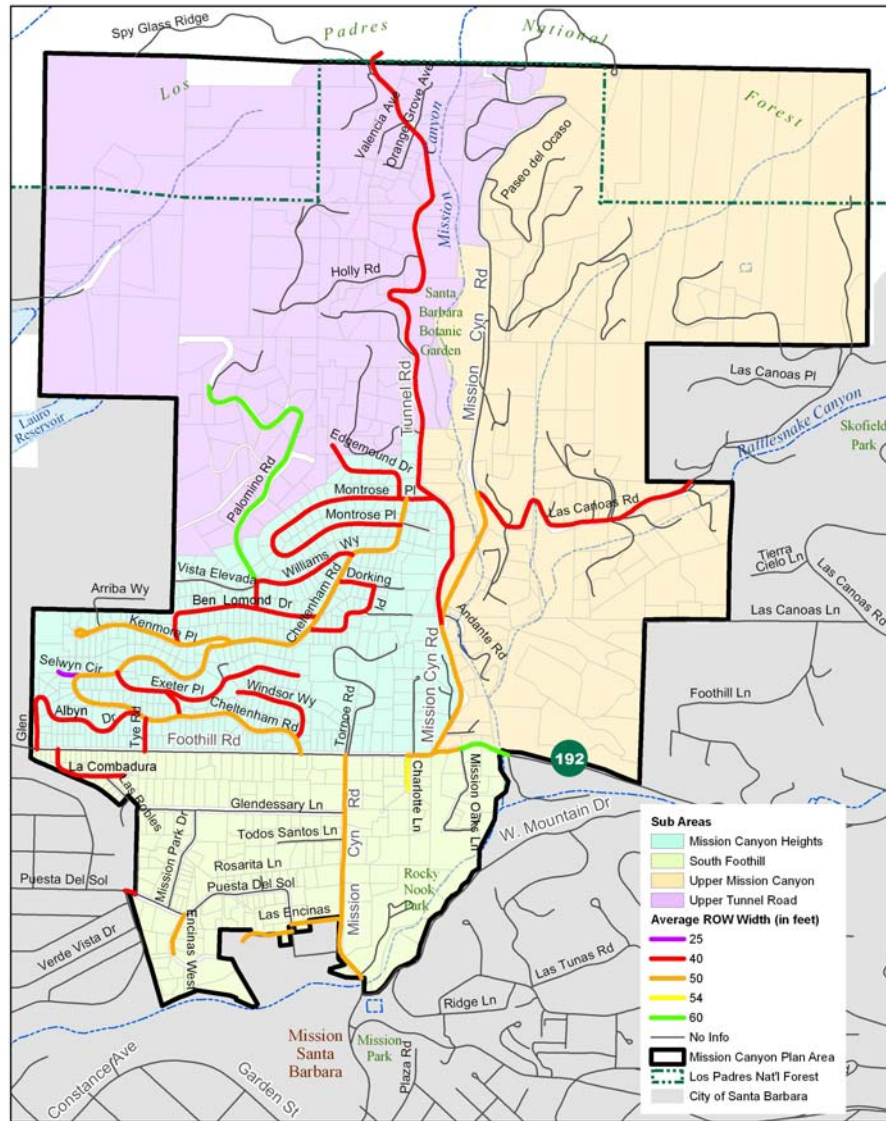




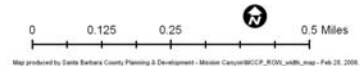
Mission Canyon Specific Plan Area
Average Roadway Widths Map

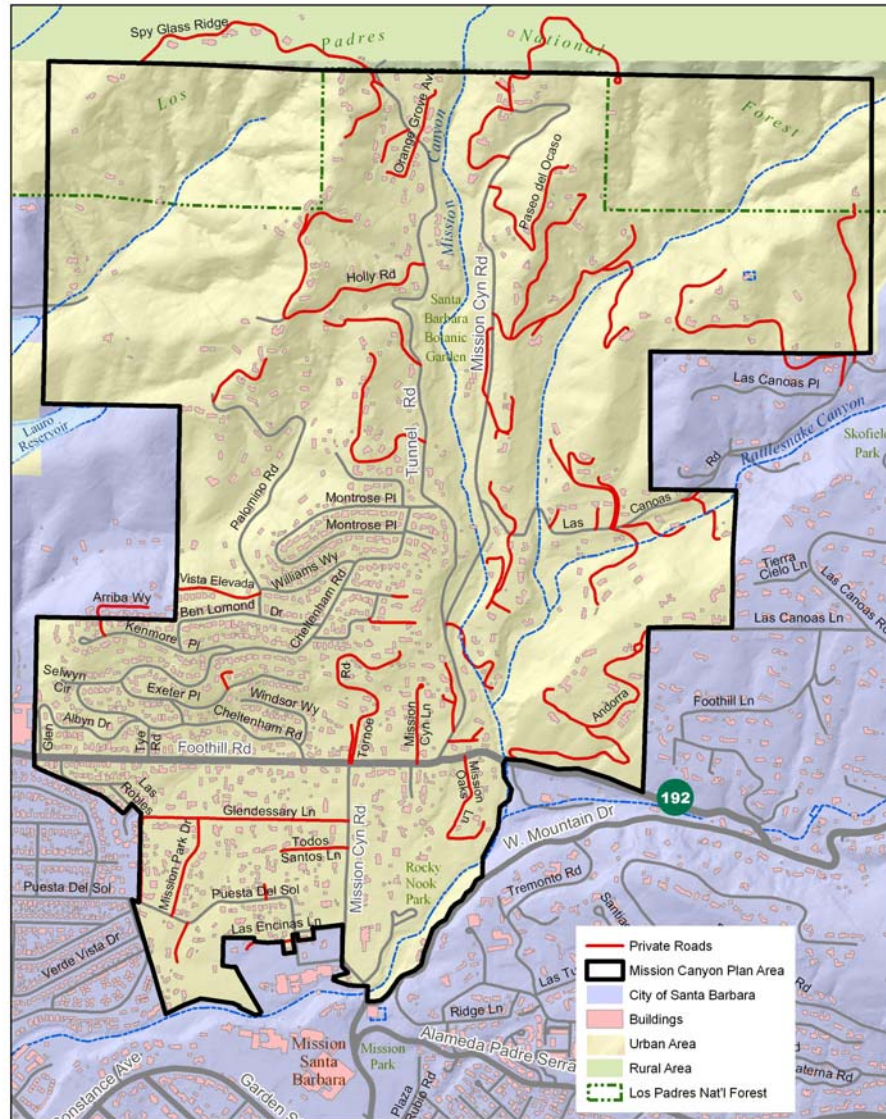


Map prepared by City of Santa Barbara Planning & Development - Mission Canyon, v.05, 3/10 - November 11, 2010



Mission Canyon Community Plan
Average Road Rights-of-Way Widths Map





Mission Canyon Community Plan
Private Roads

Designated No Parking Zones

Street	Date Designated	General Location
Mission Canyon Road	5 resolutions between 1948 - 1997	Between City Limits and Foothill and between Foothill and Tunnel Road
Exeter Place	2008	East side near Cheltenham
La Combadura Road	1995	East and west side near Foothill
Montrose	1998 and 2002	Various locations
Foothill/State Route 192	2009	TBD between Tye and Cheltenham
Tunnel Road	1979	Various locations above Orange Grove

Public Safety Questions

- How can emergency ingress/egress be improved?
- How and where does street parking affect emergency ingress and egress?
- What are alternatives to street parking in Mission Canyon?
- How can increased safety be balanced with aesthetics and semi-rural ambience?

Residential Parking Strategy Community Meeting Summary

- Approximately 40 community members attended
- Neighborhood Table Summaries
 - Mission Canyon Heights
 - Upper Mission Canyon
 - Foothill and South of Foothill



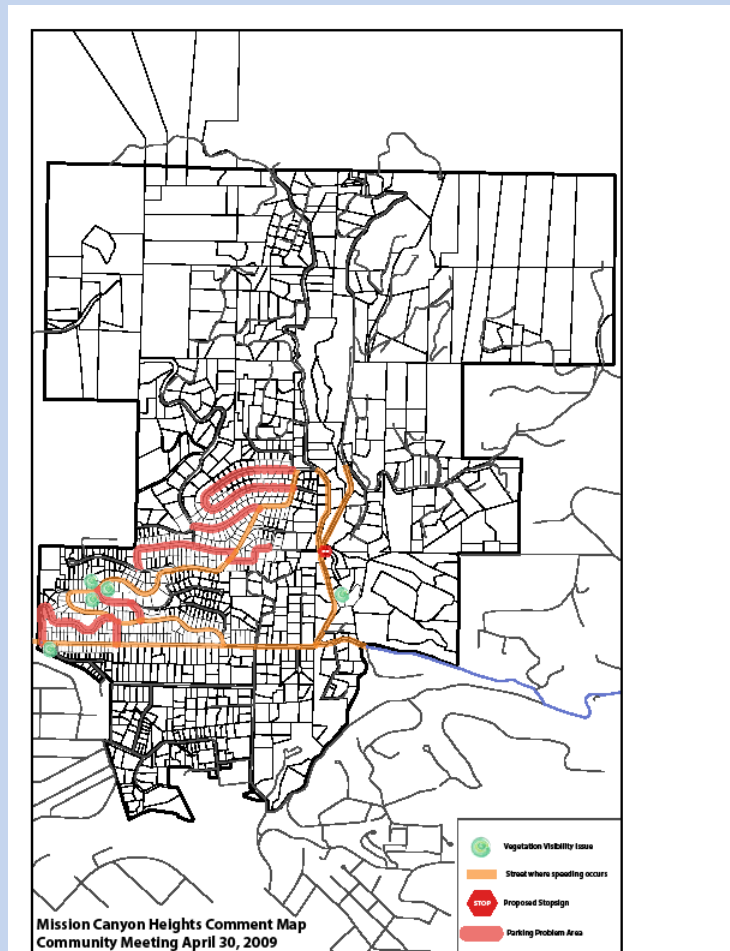
Residential Parking Strategy Community Meeting Summary

Mission Canyon Heights

- Map Overlay
- Enforcement
- Speeding
- No Parking Zones



Mission Canyon Heights Map Overlay From Community Meeting



Residential Parking Strategy Community Meeting Summary

Upper Mission Canyon

- Tunnel Road Trailhead:
 - Parking
 - Firesafe Behavior
 - Turn Around
- Enforcement
- Emergency Ingress and Egress
- Assessment District
- Hike/Bike Trail



Residential Parking Strategy Community Meeting Summary

Foothill Road and South of Foothill

- Caltrans project, existing parking and turnaround areas
- Speeding/Traffic Enforcement
- Early evacuation calls



Parking Data Collection

- Onsite parking spaces per parcel
- Streetside parking spaces
- Ability to create more street parking in the right-of-way with minor improvements



Next Steps

- Determine next MCPAC meeting date
- Define scope and tasks for subcommittee
- Refine data collection for report back to MCPAC
- Expand overlay map to other neighborhoods
- Identify most constrained areas and priorities



For More Information

- Mission Canyon Planning Area Main Web Page
http://longrange.sbcountyplanning.org/planareas/mission_canyon/missioncanyon.php
- Residential Parking Strategy Web Page
http://longrange.sbcountyplanning.org/planareas/mission_canyon/mcrps.php

