

Mission Canyon Planning Advisory Committee
Residential Parking Strategy
Community Meeting

Santa Barbara Museum
of Natural History
April 8, 2009

Meeting Agenda

- Administration/Role Call
- General Public Comment
- Welcome and Introductions
- Staff Presentations
- Table Break Out Discussions
- Table Feedback and Report
- Summary, Next Steps and Adjourn



General Public Comment

- Please complete a speaker slip



Project Staff

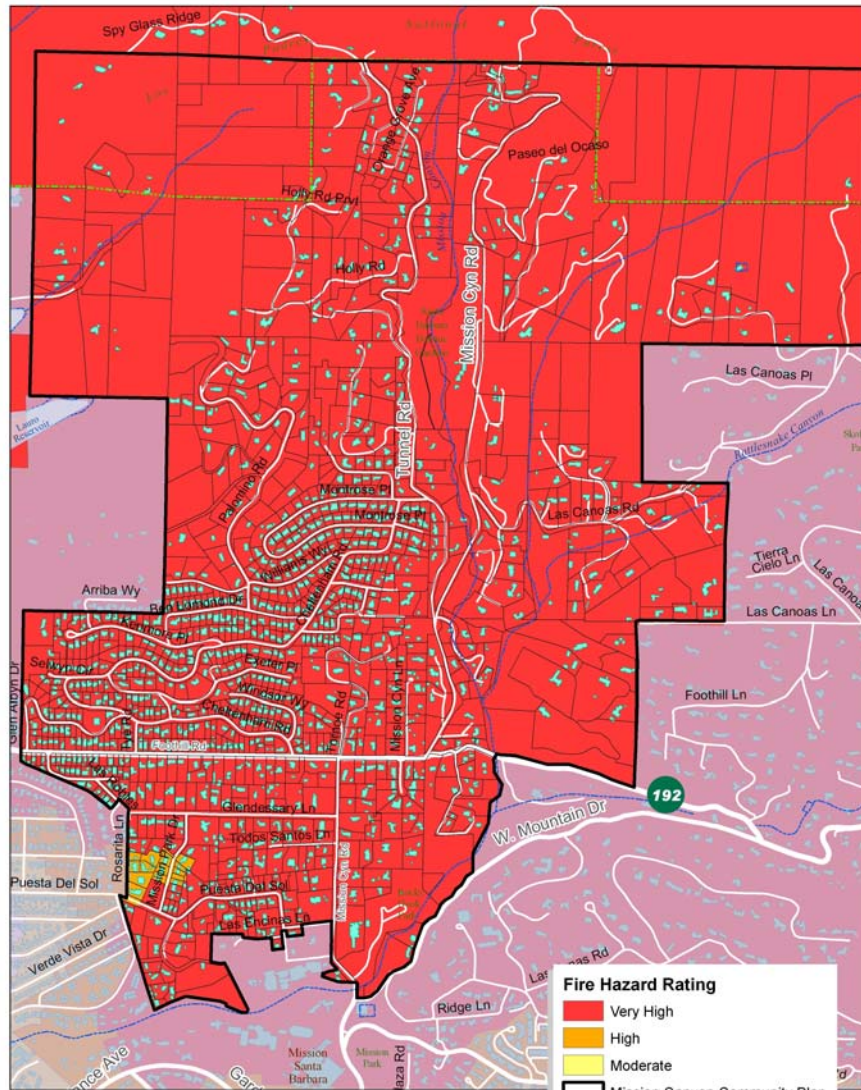
- Office of Long Range Planning
 - Derek Johnson
 - David Lackie
 - Rosie Dyste
 - Greg Wiley
- Public Works
 - Will Robertson
- Fire Department
 - Martin Johnson
 - Glenn Fidler



Need for the Project

- Parking complaints consistently top the list of issues reported by the MCA
- High Fire Hazard Severity Zone
- Priority needs expressed by community
- Public Safety
- Improve Ingress and Egress





Mission Canyon Community Plan
Fire Hazard Severity Zones
 Combined Federal, State, and
 Draft of Local Responsibility Areas
 pending official adoption expected in Summer of 2009



Project Background

- Action CIRC-MC-3.2 from Draft Mission Canyon Community Plan
 - develop residential parking strategy
- Board of Supervisors approved funding in FY 08-09



Project Goal/Objectives

- Goal: Improve emergency ingress and egress and public safety
 - Identify areas of the Canyon where traffic flow is constrained due to on-street parking on narrow streets
 - Prepare Parking Strategy for Decision Maker approval



Project Approach

- Community Survey
- Community Workshops (3, Spring\Summer)
- Develop Feasible Strategies (Summer\Fall)
- Plan Adoption (Fall\Winter)
- Implementation



Implementation/ Phase II

- Depending on options recommended for approval, low cost immediate implementation items may move forward
- Project does not fund significant capital improvement projects identified for implementation
- Phase II will evaluate options projected to cost over \$100,000 for inclusion into the County's Five Year Capital Improvement Program

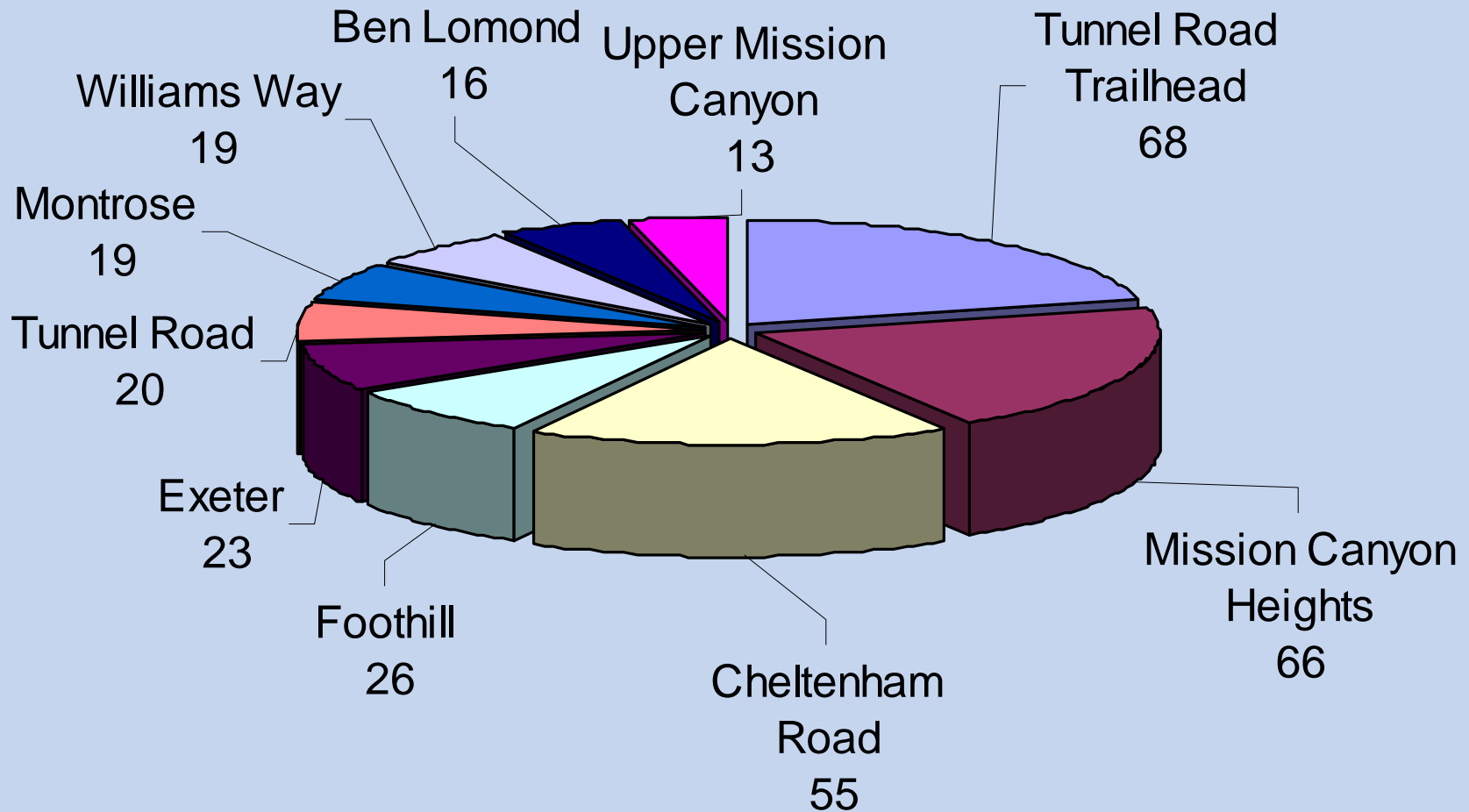


Community Survey Results

- 1,310 Surveys mailed
- 374 Surveys (28%) returned
- Top Priority Areas (Questions 1-14)
 - 71% agree that intersection visibility should be improved
 - 69% agree County should designate new No Parking zones on heavily impacted streets
 - 69% agree that the County should coordinate with the City to handle extra traffic and parking for special events
 - 66% agree that enforcement should be increased



Question 16: Which areas experience the most severe parking problems?



Question 16 Photographs



Tunnel Road Trailhead



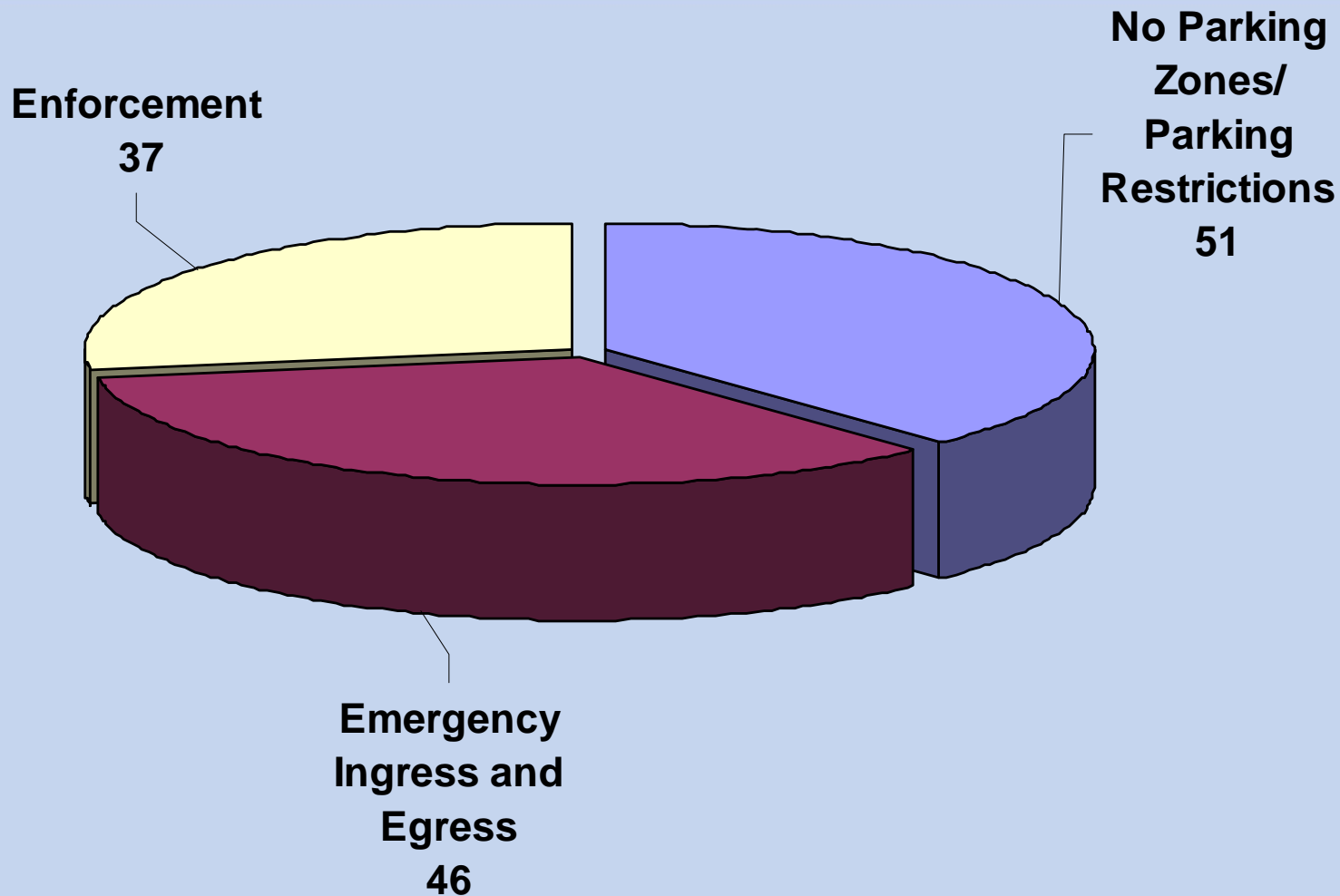
Cheltenham Road



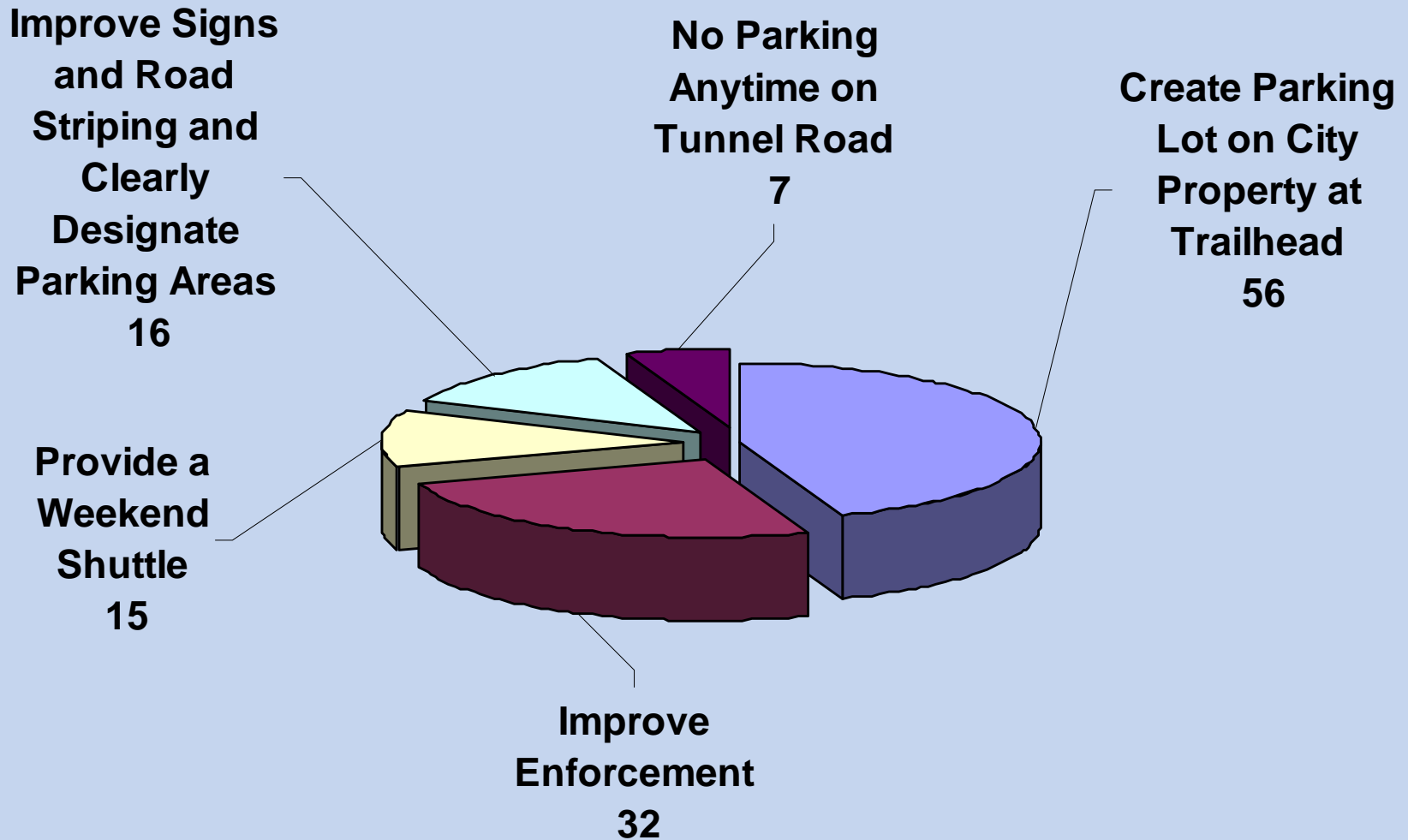
Mission Canyon Heights



Question 17: What are the top three priority areas for improvement?



Question 18: What are your ideas to improve trailhead parking?



For More Information

- Mission Canyon Planning Area Main Web Page
http://longrange.sbcountyplanning.org/planareas/mission_canyon/missioncanyon.php
- Residential Parking Strategy Web Page
http://longrange.sbcountyplanning.org/planareas/mission_canyon/mcrps.php



World Café Meeting Format

- Neighborhood Tables
- MCPAC Facilitators
- Maps
- Discussion
- Report Back

