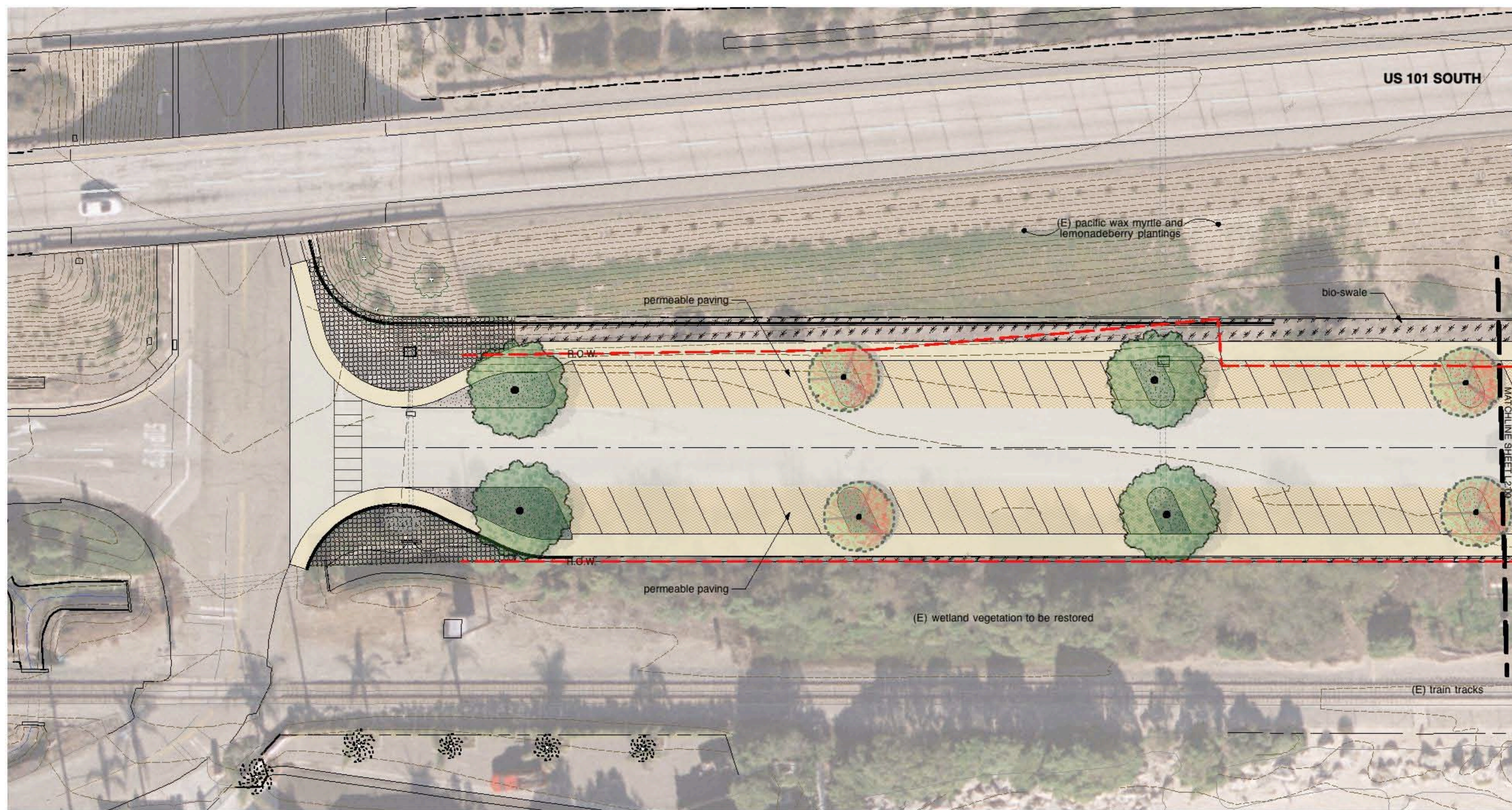


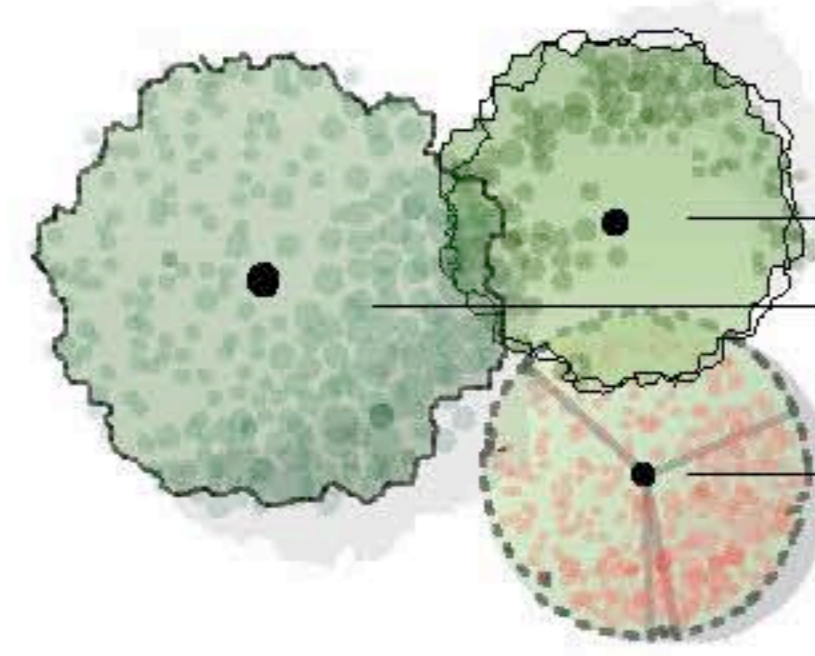
ALL IDEAS, DESIGN ARRANGEMENTS AND PLANS INDICATED OR REPRESENTED BY THIS DRAWING ARE OWNED BY AND THE PROPERTY OF VAN ATTA ASSOCIATES, INC. AND WERE CREATED, ENDED AND REVISED FOR USE ON, AND IN CONNECTION WITH THE PROJECT. NONE OF SUCH IDEAS, DESIGN ARRANGEMENTS OR PLANS SHALL BE USED BY OR DISCLOSED TO ANY PERSON, FIRM OR CORPORATION FOR ANY PURPOSE, WHATSOEVER, WITHOUT THE WRITTEN PERMISSION OF VAN ATTA ASSOCIATES, INC. THESE DRAWINGS OR SPECIFICATIONS WITH ANY PUBLIC AGENCY IS NOT A PUBLICATION OF SAME. NO COPYING, REPRODUCTION OR USE THEREOF IS PERMISSIBLE WITHOUT THE WRITTEN CONSENT OF VAN ATTA ASSOCIATES, INC.

July 31, 2012
 11:05 Santa Claus CD 130729a6.vsw



Legend

- Right Of Way
- Existing Tree
- Proposed Tree
- Permeable Paving
- Hardscape

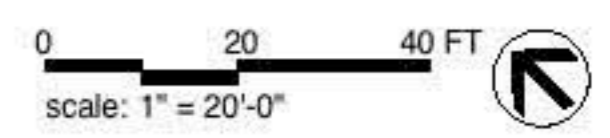


Plant Palette

| Botanic Name | Common Name |
|--------------------------------|-----------------------|
| Boulevard Trees | |
| <i>Quercus agrifolia</i> | Coast Live Oak |
| <i>Quercus tomentella</i> | Island Oak |
| Small Trees | |
| <i>Ceanothus 'Ray Hartman'</i> | Ray Hartman Ceanothus |

| Botanic Name | Common Name |
|---|------------------------|
| Coastal Bluff Plants | |
| <i>Atriplex lentiformis</i> | Quailbush |
| <i>Baccharis pilularis</i> | Coyote Bush |
| <i>Ceanothus sp.</i> | ... |
| <i>Encelia californica</i> | California Sunflower |
| <i>Myrica californica</i> | Pacific Wax Myrtle |
| <i>Rhus integrifolia</i> | Lemonadeberry |
| Dune and Coastal Plants | |
| <i>Arctostaphylos pumila</i> | Dune Manzanita |
| <i>Camissonia cheiranthifolia</i> | Evening Primrose |
| <i>Ceanothus maritimus</i> | Maritime Ceanothus |
| <i>Fragaria chiloensis</i> | Beach Strawberry |
| <i>Leymus condensatus 'Canyon Prince'</i> | Canyon Prince Wild Rye |

| Botanic Name | Common Name |
|--------------------------------|------------------------|
| Wetland Plants | |
| <i>Anemopsis californica</i> | Yerba Mansa |
| <i>Oenothera elata</i> | Evening Primrose |
| <i>Salix exigua</i> | Sandbar Willow |
| <i>Juncus patens</i> | Common Rush |
| <i>Juncus textilis</i> | Basket Rush |
| Flowering Native Plants | |
| <i>Achillea 'Island Pink'</i> | Island Pink Yarrow |
| <i>Epilobium canum</i> | California Fuchsia |
| <i>Galvezia speciosa</i> | Island Bush Snapdragon |
| <i>Iris douglasiana</i> | Douglas Iris |
| <i>Salvia clevelandii</i> | Cleveland Sage |



| | | | | | | | | |
|-----------------------------|--|---|---|----------------------------------|--|----------------------|--|--------------------------------------|
| CONSTRUCTION STARTED: | | COUNTY OF SANTA BARBARA DEPARTMENT OF PLANNING & DEVELOPMENT | DESIGN BY: Susan Van Atta | CHECKED BY: Susan Van Atta | SCALE: AS NOTED | PROJECT NO. 11-05 | SANTA CLAUS LANE CIRCULATION & PARKING IMPROVEMENTS | L 1.00 SHEET NO. 1 OF 9 |
| CONSTRUCTION COMPLETED: | | FOR REDUCED PLANS ORIGINAL SCALE IN INCHES | DRAWN BY: Scott Capps | CONSTRUCTABILITY REVIEW BY: * | DISREGARD PRINTS BEARING EARLIER REVISION DATES | | | |
| RECORD DRAWING APPROVED BY: | | 0 1 2 3 | REVISION DATES (PRELIMINARY STAGE ONLY) | | | | | |

LANDSCAPE ARCHITECT:

 Van Atta Associates, Inc.
 235 Palm Avenue,
 Santa Barbara, CA 93101
 TEL. 805.730.7444 • CL# 2928