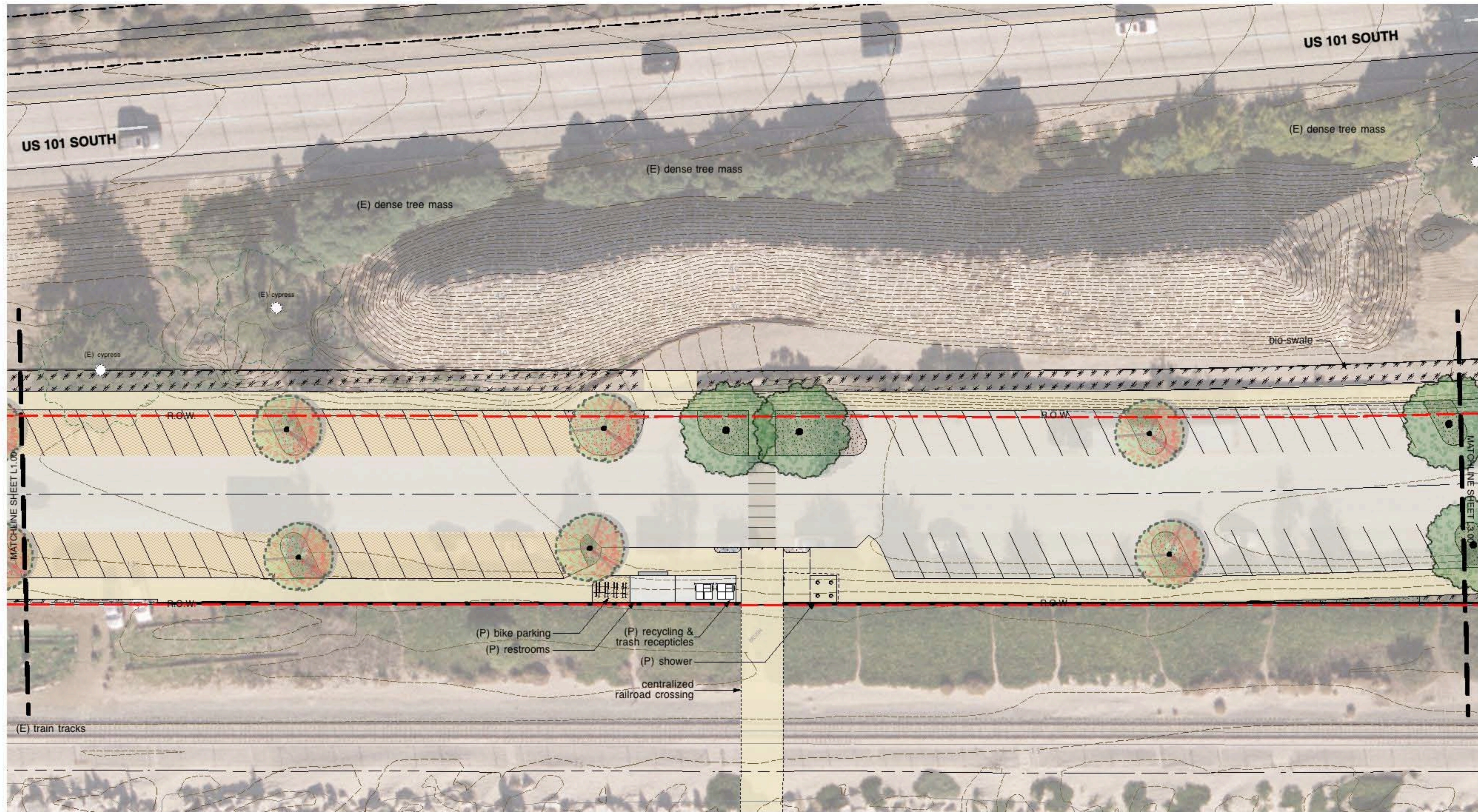
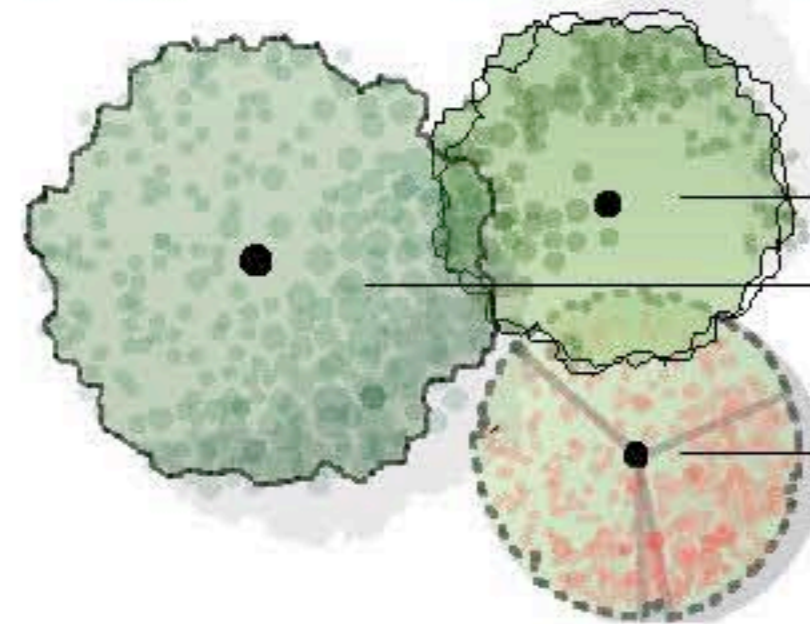


ALL IDEAS, DESIGN, ARRANGEMENTS AND PLANS INDICATED OR REPRESENTED BY THIS DRAWING ARE OWNED BY AND THE PROPERTY OF VAN ATTA ASSOCIATES INC. AND WERE CREATED, EVOLVED AND DEVELOPED FOR USE ON, AND IN CONNECTION WITH THIS PROJECT. NONE OF SUCH IDEAS, DESIGN, ARRANGEMENTS, OR PLANS SHALL BE USED, BY OR DISCLOSED TO ANY PERSON, FIRM OR CORPORATION FOR ANY PURPOSE, WHATSOEVER WITHOUT THE WRITTEN PERMISSION OF VAN ATTA ASSOCIATES INC. DRAWINGS OR SPECIFICATIONS WITH ANY PUBLIC AGENCY IS NOT A PUBLICATION OF SAME. NO COPYING, REPRODUCTION OR USE THEREOF IS PERMISSIBLE WITHOUT THE WRITTEN CONSENT OF VAN ATTA ASSOCIATES INC.



Legend

- Right Of Way
- Existing Tree
- Proposed Tree
- Permeable Paving
- Hardscape



Plant Palette

Botanic Name

Common Name

Boulevard Trees

- Quercus agrifolia* Coast Live Oak
- Quercus tomentella* Island Oak
- Ceanothus 'Ray Hartman'* Ray Hartman Ceanothus

Small Trees

Botanic Name

Common Name

Coastal Bluff Plants

- Atriplex lentiformis* Quailbush
- Baccharis pilularis* Coyote Bush
- Ceanothus sp.* California Sunflower
- Encelia californica* Pacific Wax Myrtle
- Myrica californica* Lemonadeberry
- Rhus integrifolia*
- Arctostaphylos pumila* Dune Manzanita
- Camissonia cheiranthifolia* Evening Primrose
- Ceanothus maritimus* Maritime Ceanothus
- Fragaria chiloensis* Beach Strawberry
- Leymus condensatus 'Canyon Prince'* Canyon Prince Wild Rye

Dune and Coastal Plants

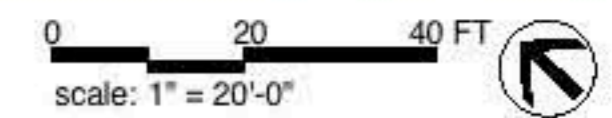
Botanic Name

Common Name

Wetland Plants

- Anemopsis californica* Yerba Mansa
- Oenothera elata* Evening Primrose
- Salix exiata* Sandbar Willow
- Juncus patens* Common Rush
- Juncus textilis* Basket Rush
- Achillea 'Island Pink'* Island Pink Yarrow
- Epilobium canum* California Fuchsia
- Galvezia speciosa* Island Bush Snapdragon
- Iris douglasiana* Douglas Iris
- Salvia clevelandii* Cleveland Sage

Flowering Native Plants



CONSTRUCTION STARTED:	
CONSTRUCTION COMPLETED:	
RECORD DRAWING APPROVED BY:	

LANDSCAPE ARCHITECT:
 Van Atta Associates, Inc.
 235 Palm Avenue,
 Santa Barbara, CA 93101
 TEL. 805.730.7444 • CL# 2928

COUNTY OF SANTA BARBARA
 DEPARTMENT OF
 PLANNING & DEVELOPMENT

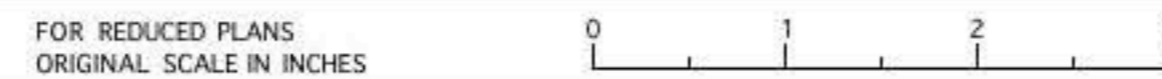
DESIGN BY:
Susan Van Atta
 DRAWN BY:
Scott Capps

CHECKED BY:
Susan Van Atta
 CONSTRUCTABILITY REVIEW BY:
*

SCALE:
AS NOTED
 PROJECT NO.
11-05

SANTA CLAUS LANE
 CIRCULATION & PARKING IMPROVEMENTS

L 2.00
 SHEET NO.
2 OF 9



DISREGARD PRINTS BEARING EARLIER REVISION DATES	REVISION DATES (PRELIMINARY STAGE ONLY)