



County of Santa Barbara Planning and Development

Glenn S. Russell, Ph.D., Director
Dianne Black, Assistant Director

NOTICE OF PREPARATION

DATE: October 18, 2017

TO: State Clearinghouse
1400 Tenth Street
Sacramento, CA 95814

FROM: County of Santa Barbara
Planning and Development Department
Long Range Planning Division
123 E. Anapamu Street
Santa Barbara, CA 93101-2058
(805) 568-2000

SUBJECT: Notice of Preparation and Scoping of a Program Environmental Impact Report

PROJECT NAME: Hoop Structures Ordinance Amendment

PROJECT CASE NO.: 17ORD-00000-00005

PROJECT LOCATION: The Hoop Structures Ordinance Amendment project involves the inland, unincorporated areas of the County of Santa Barbara.

LEAD AGENCY: The County of Santa Barbara is the lead agency preparing a focused Program Environmental Impact Report (EIR) with the purpose of informing decision-makers and the public regarding the potential environmental effects related to the project in compliance with the California Environmental Quality Act (Public Resources Code § 21000 et seq.).

PROJECT DESCRIPTION: The Hoop Structures Ordinance Amendment would amend the County of Santa Barbara Land Use and Development Code (LUDC) to revise and clarify the permitting requirements for hoop structures on agriculturally zoned lands in the inland, unincorporated areas of Santa Barbara County. The project would not affect lands in the Coastal Zone, or lands under the jurisdiction of incorporated cities, the federal government (e.g., Los Padres National Forest, Vandenberg Air Force Base), and the University of California, Santa Barbara (UCSB).

The project would amend the LUDC to include the following components:

- ◆ Explicitly identify hoop structures (also known as hoop houses and berry hoops) as an allowed use in the Agriculture-I and Agriculture-II zones.
- ◆ Land Use Permit exemption for hoop structures that are no taller than 20 feet, irrespective of the overall area covered by the structures.

- ◆ Identify operational development standards (best management practices) that would be applied in order for the hoop structures to qualify for the permit exemption.
- ◆ Develop permitting requirements for hoop structures that are taller than 20 feet.

ENVIRONMENTAL ISSUE AREAS: The EIR will analyze the proposed Hoop Structures Ordinance Amendment to assess the significance of any resulting effects on the environment and where necessary, identify mitigation measures. Mitigation measures may include operational development standards or best management practices that mitigate potential effects on, and are protective of, the environment and the health, safety, and welfare of the public. The EIR will also evaluate cumulative impacts, and the potential effects for several alternatives to the proposed amendment, including a no project alternative.

The EIR analysis will focus on the following key issue areas:

- ◆ Aesthetics/Visual Resources – the EIR will analyze the potential effects of the project on visual resources as seen from public viewing areas. Mitigation may include minimum setbacks from public roads and/or residentially zoned lands.
- ◆ Agricultural Resources – the EIR will analyze the potential effects of the project on agricultural resources, including prime soils and Farmlands of Statewide Importance. The EIR will also analyze beneficial aspects of the use of hoop structures in minimizing or reducing potentially adverse effects on the environment.
- ◆ Land Use – the EIR will examine the project for compatibility with existing land uses, and analyze whether the project would cause a physical change that would conflict with existing local, State, and Federal regulations for avoiding or mitigating an environmental effect. The analysis will consider the potential mitigating effects of proposed development standards related to potential land use impacts.
- ◆ Resource Recovery/Solid Waste Management – the EIR will analyze the potential effects of the project as a result of the use and eventual disposal of the materials used to install or erect hoop structures. Mitigation may include recycling of typically used materials.
- ◆ Water Resources – the EIR will analyze the potential effects of the project on water resources, including groundwater recharge, stormwater runoff, drainage, and water erosion of soils. Mitigation may include measures to reduce concentrated runoff and drainage that might otherwise result from the use of impermeable membrane covers.

AGENCY COMMENTS: We need to know the views of your agency as to the scope and content of the environmental information which is germane to your agency's statutory responsibilities in connection with the proposed project. Your agency may need to use the EIR prepared by our agency when considering your permit or other approval for the project.

PUBLIC ENVIRONMENTAL SCOPING MEETING: Members of the public are also encouraged to provide comments on the scope of the proposed EIR. The Planning and Development Department will hold two environmental scoping meetings at the following locations:

Santa Maria
Thursday, October 26, 2017 at 6:00 p.m.
Board of Supervisors Hearing Room
Betteravia Government Center
511 East Lakeside Parkway

Santa Barbara
Thursday, November 2, 2017 at 5:30 p.m.
Planning Commission Hearing Room
County Engineering Building
123 East Anapamu Street

The purpose of these meetings is to receive comments on the scope and content of the environmental issues to be addressed in the EIR.

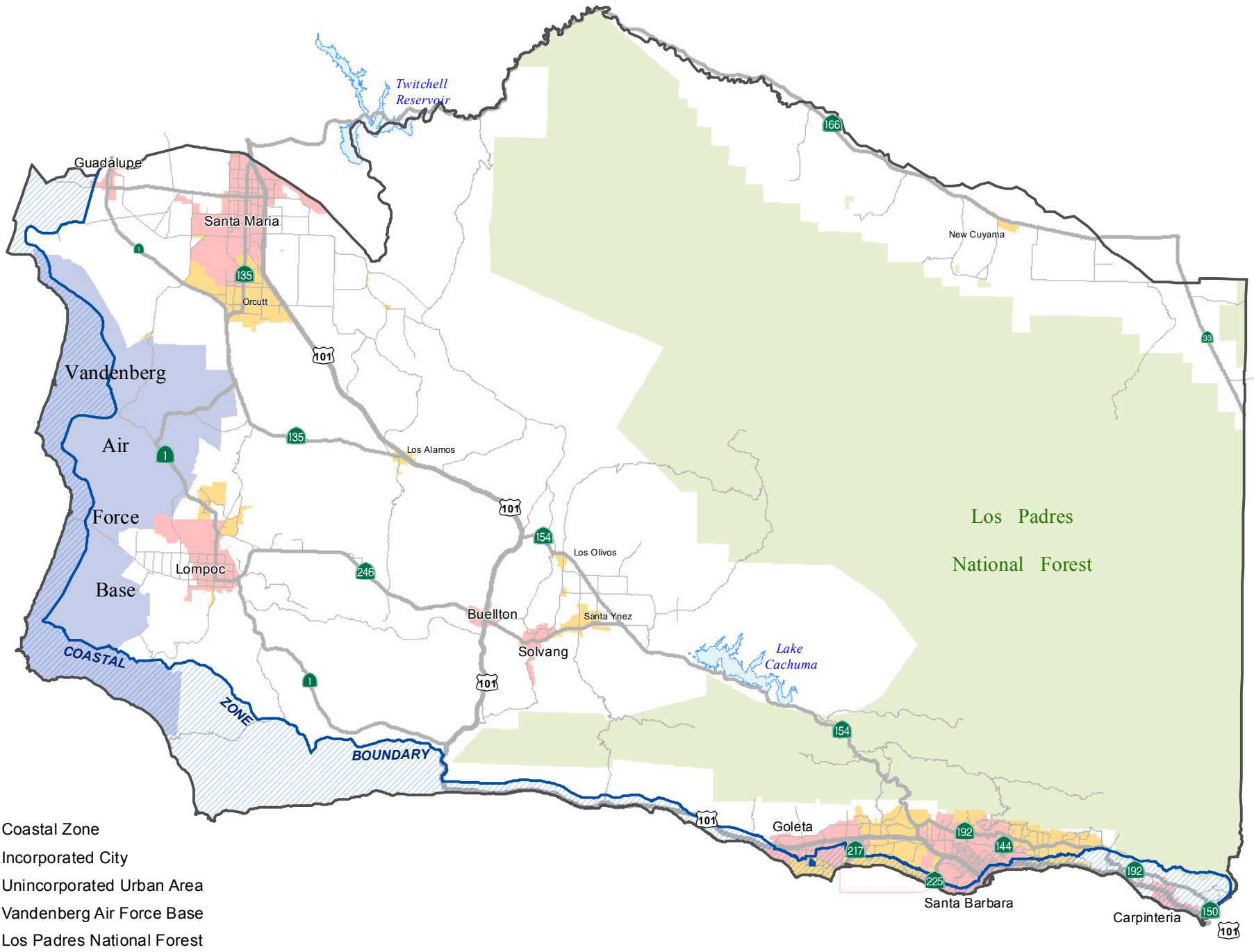
Agency and public **comments must be received no later than 5:00 p.m. on Thursday, November 16, 2017.** Please send your comments and the name of a contact person in your agency to the Project Manager, Julie L. Harris, at the address provided below.

Planner: Julie L. Harris
Long Range Planning Division
Planning and Development Department
123 East Anapamu Street
Santa Barbara, CA 93101
Telephone: (805) 568-3543
Email: jharris@countyofsb.org

Additional information regarding the project will be posted to the project's webpage as it becomes available at: <http://longrange.sbcountyplanning.org/programs/Hoop%20Structures/Hoops.php>.

cc: County of Santa Barbara Clerk of the Board

Enclosure: Project Location Map



Santa Barbara County

